

# ATP5H Rabbit Polyclonal Antibody

Catalog No: #54855



Package Size: #54855-1 50ul #54855-2 100ul

Orders: [order@signalwayantibody.com](mailto:order@signalwayantibody.com)  
Support: [tech@signalwayantibody.com](mailto:tech@signalwayantibody.com)

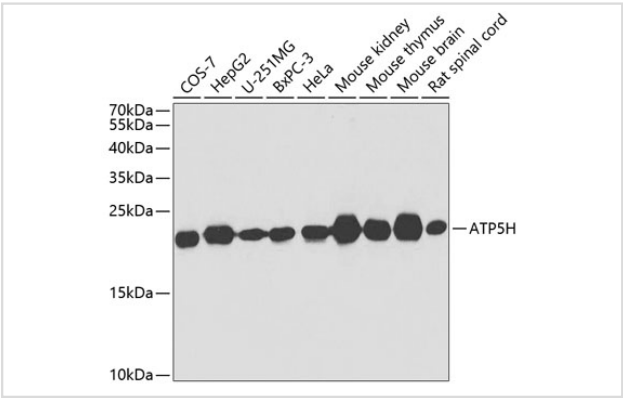
## Description

Product Name	ATP5H Rabbit Polyclonal Antibody
Host Species	Rabbit
Clonality	Polyclonal
Isotype	IgG
Purification	Affinity purification
Applications	WB,IHC,IF
Species Reactivity	Human,Mouse,Rat
Immunogen Description	Recombinant fusion protein of human ATP5H (NP_006347.1).
Other Names	ATP5H;ATPQ
Accession No.	Swiss Prot:O75947GeneID:10476
Uniprot	O75947
Calculated MW	15kDa/18kDa
SDS-PAGE MW	18kDa
Formulation	Buffer: PBS with 0.02% sodium azide,50% glycerol,pH7.3.
Storage	Store at -20°C. Avoid freeze / thaw cycles.

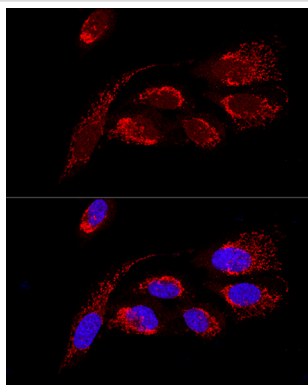
## Application Details

WB 1:500 - 1:2000IHC 1:50 - 1:200IF 1:50 - 1:200

## Images



Western blot analysis of extracts of various cell lines, using ATP5H at 1:1000 dilution.



Confocal immunofluorescence analysis of U2OS cells using ATP5H Polyclonal at dilution of 1:100. Blue: DAPI for nuclear staining.

## Background

Mitochondrial ATP synthase catalyzes ATP synthesis, utilizing an electrochemical gradient of protons across the inner membrane during oxidative phosphorylation. It is composed of two linked multi-subunit complexes: the soluble catalytic core, F1, and the membrane-spanning component, Fo, which comprises the proton channel. The F1 complex consists of 5 different subunits (alpha, beta, gamma, delta, and epsilon) assembled in a ratio of 3 alpha, 3 beta, and a single representative of the other 3. The Fo seems to have nine subunits (a, b, c, d, e, f, g, F6 and 8). This gene encodes the d subunit of the Fo complex. Alternatively spliced transcript variants encoding different isoforms have been identified for this gene. In addition, three pseudogenes are located on chromosomes 9, 12 and 15.

Note: This product is for in vitro research use only