

CIB1 Rabbit Polyclonal Antibody

Catalog No: #54857



Package Size: #54857-1 50ul #54857-2 100ul

Orders: order@signalwayantibody.com
Support: tech@signalwayantibody.com

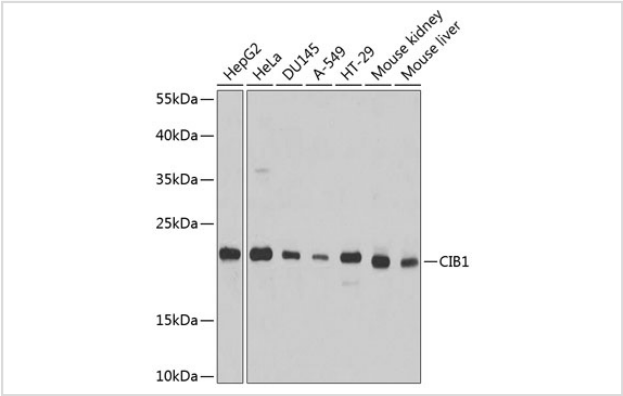
Description

Product Name	CIB1 Rabbit Polyclonal Antibody
Host Species	Rabbit
Clonality	Polyclonal
Isotype	IgG
Purification	Affinity purification
Applications	WB
Species Reactivity	Human,Mouse,Rat
Immunogen Description	Recombinant fusion protein of human CIB1 (NP_006375.2).
Other Names	CIB1;CIB;CIBP;KIP1;PRKDCIP;SIP2-28
Accession No.	Uniprot:Q99828GeneID:10519
Uniprot	Q99828
GeneID	10519
Calculated MW	21kDa/26kDa
SDS-PAGE MW	22kDa
Formulation	PBS with 0.02% sodium azide,50% glycerol,pH7.3.
Storage	Store at -20°C. Avoid freeze / thaw cycles.

Application Details

WB 1:500 - 1:2000

Images



Western blot analysis of extracts of various cell lines, using CIB1 antibody.

Background

This gene encodes a member of the EF-hand domain-containing calcium-binding superfamily. The encoded protein interacts with many other proteins, including the platelet integrin alpha-IIb-beta-3, DNA-dependent protein kinase, presenilin-2, focal adhesion kinase, p21 activated kinase, and protein kinase D. The encoded protein may be involved in cell survival and proliferation, and is associated with several disease states including cancer and

Alzheimer's disease. Alternative splicing results in multiple transcript variants.

Note: This product is for in vitro research use only