

ADRM1 Rabbit Polyclonal Antibody

Catalog No: #54864



Package Size: #54864-1 50ul #54864-2 100ul

Orders: order@signalwayantibody.com
Support: tech@signalwayantibody.com

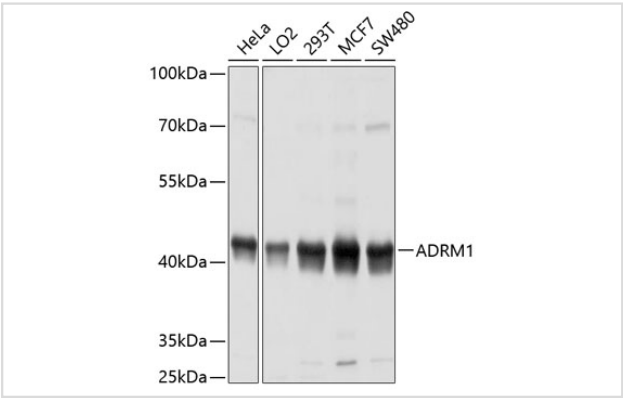
Description

Product Name	ADRM1 Rabbit Polyclonal Antibody
Host Species	Rabbit
Clonality	Polyclonal
Isotype	IgG
Purification	Affinity purification
Applications	WB,IHC,IF
Species Reactivity	Human,Mouse,Rat
Immunogen Description	Recombinant fusion protein of human ADRM1 (NP_008933.2).
Other Names	ADRM1;ARM-1;ARM1;GP110
Accession No.	Swiss Prot:Q16186GeneID:11047
Uniprot	Q16186
Calculated MW	42kDa
SDS-PAGE MW	42kDa
Formulation	Buffer: PBS with 0.02% sodium azide,50% glycerol,pH7.3.
Storage	Store at -20°C. Avoid freeze / thaw cycles.

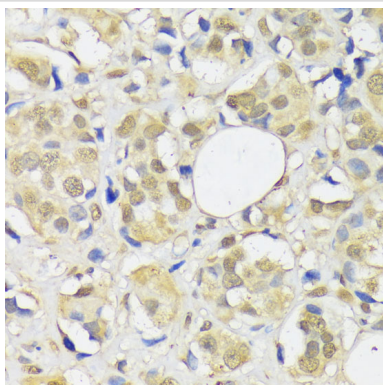
Application Details

WB 1:500 - 1:2000IHC 1:50 - 1:200IF 1:50 - 1:200

Images



Western blot analysis of extracts of various cell lines, using ADRM1 at 1:1000 dilution.



Immunohistochemistry of paraffin-embedded human breast cancer using ADRM1 at dilution of 1:100 (40x lens).

Background

This gene encodes a member of the adhesion regulating molecule 1 protein family. The encoded protein is a component of the proteasome where it acts as a ubiquitin receptor and recruits the deubiquitinating enzyme, ubiquitin carboxyl-terminal hydrolase L5. Increased levels of the encoded protein are associated with increased cell adhesion, which is likely an indirect effect of this intracellular protein. Dysregulation of this gene has been implicated in carcinogenesis. Alternative splicing results in multiple transcript variants.

Note: This product is for in vitro research use only