

# KHDRBS1 Rabbit Polyclonal Antibody

Catalog No: #54969



Package Size: #54969-1 50ul #54969-2 100ul

Orders: [order@signalwayantibody.com](mailto:order@signalwayantibody.com)  
Support: [tech@signalwayantibody.com](mailto:tech@signalwayantibody.com)

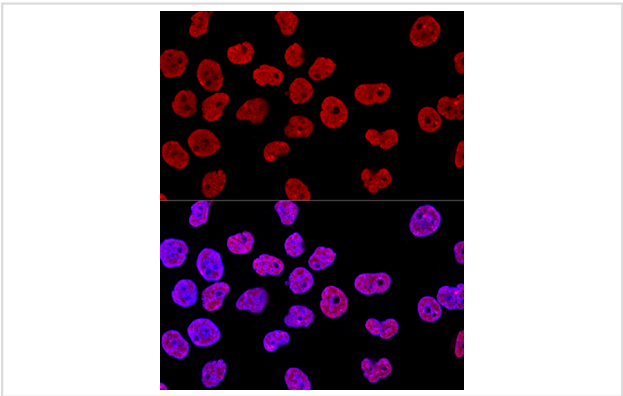
## Description

Product Name	KHDRBS1 Rabbit Polyclonal Antibody
Host Species	Rabbit
Clonality	Polyclonal
Isotype	IgG
Purification	Affinity purification
Applications	WB,IHC,IF
Species Reactivity	Human,Mouse,Rat
Immunogen Description	A synthetic peptide of human KHDRBS1 (NP_006550.1).
Other Names	KHDRBS1;Sam68;p62;p68
Accession No.	Swiss Prot:Q07666GeneID:10657
Uniprot	Q07666
Calculated MW	44kDa/45kDa/48kDa
SDS-PAGE MW	68kDa
Formulation	Buffer: PBS with 0.02% sodium azide,50% glycerol,pH7.3.
Storage	Store at -20°C. Avoid freeze / thaw cycles.

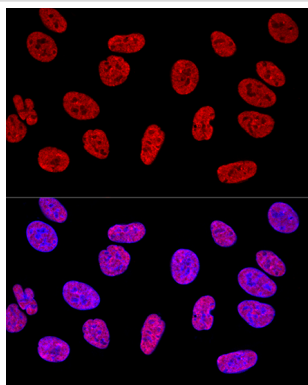
## Application Details

WB 1:500 - 1:2000IHC 1:100 - 1:200IF 1:50 - 1:200

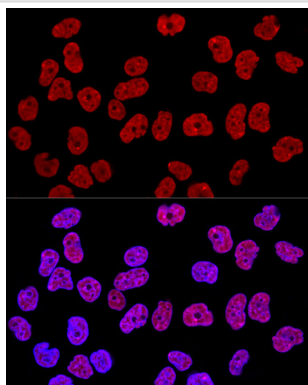
## Images



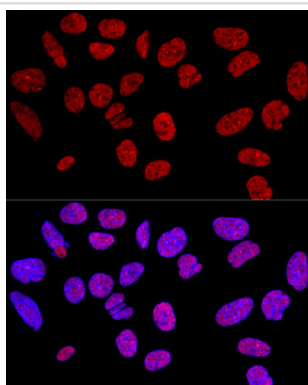
Confocal immunofluorescence analysis of HeLa cells using KHDRBS1 Polyclonal at dilution of 1:400. Blue: DAPI for nuclear staining.



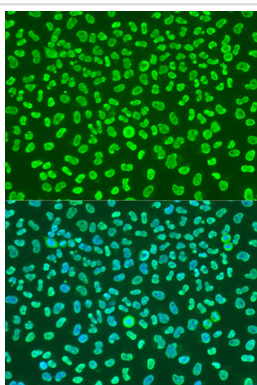
Confocal immunofluorescence analysis of U2OS cells using KHDRBS1 Polyclonal at dilution of 1:400. Blue: DAPI for nuclear staining.



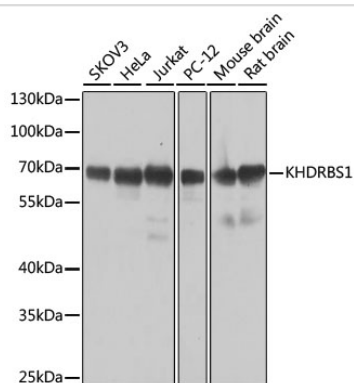
Confocal immunofluorescence analysis of HeLa cells using KHDRBS1 Polyclonal at dilution of 1:400. Blue: DAPI for nuclear staining.



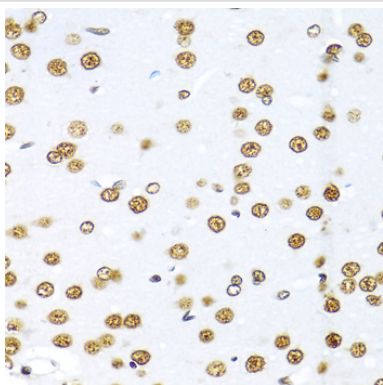
Confocal immunofluorescence analysis of U-2 OS cells using KHDRBS1 Polyclonal at dilution of 1:400. Blue: DAPI for nuclear staining.



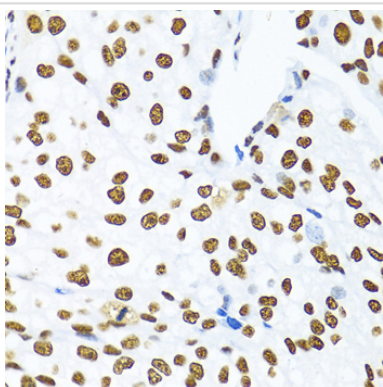
Immunofluorescence analysis of U2OS cells using KHDRBS1 at dilution of 1:100. Blue: DAPI for nuclear staining.



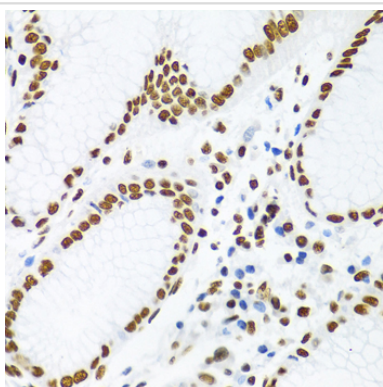
Western blot analysis of extracts of various cell lines, using KHDRBS1 at 1:1000 dilution.



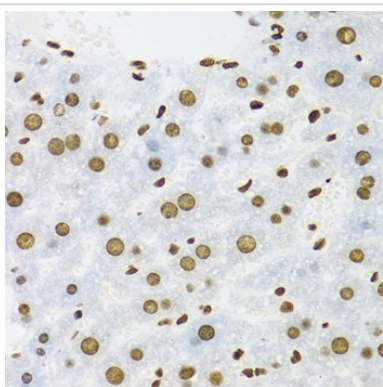
Immunohistochemistry of paraffin-embedded rat brain using KHDRBS1 at dilution of 1:100 (40x lens).



Immunohistochemistry of paraffin-embedded human prostate cancer using KHDRBS1 at dilution of 1:100 (40x lens).



Immunohistochemistry of paraffin-embedded human stomach using KHDRBS1 at dilution of 1:100 (40x lens).



Immunohistochemistry of paraffin-embedded mouse liver using KHDRBS1 at dilution of 1:100 (40x lens).

## Background

This gene encodes a member of the K homology domain-containing, RNA-binding, signal transduction-associated protein family. The encoded protein appears to have many functions and may be involved in a variety of cellular processes, including alternative splicing, cell cycle regulation, RNA 3'-end formation, tumorigenesis, and regulation of human immunodeficiency virus gene expression. Alternative splicing results in multiple transcript variants.

---

Note: This product is for in vitro research use only