

CPM Rabbit Polyclonal Antibody

Catalog No: #55000



Package Size: #55000-1 50ul #55000-2 100ul

Orders: order@signalwayantibody.com
Support: tech@signalwayantibody.com

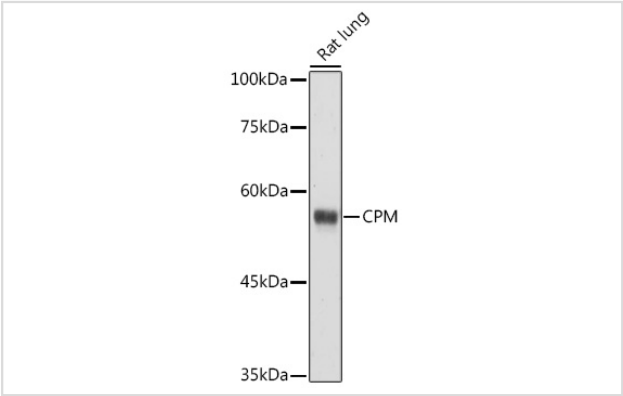
Description

Product Name	CPM Rabbit Polyclonal Antibody
Host Species	Rabbit
Clonality	Polyclonal
Isotype	IgG
Purification	Affinity purification
Applications	WB,IHC
Species Reactivity	Human,Rat
Immunogen Description	Recombinant fusion protein of human CPM (NP_001005502.1).
Other Names	CPM
Accession No.	Uniprot:P14384GenelD:1368
Uniprot	P14384
GenelD	1368
Calculated MW	50kDa
SDS-PAGE MW	51KDa
Formulation	PBS with 0.02% sodium azide,50% glycerol,pH7.3.
Storage	Store at -20°C. Avoid freeze / thaw cycles.

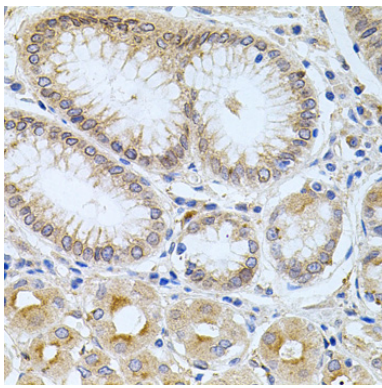
Application Details

WB 1:500 - 1:2000IHC 1:50 - 1:100

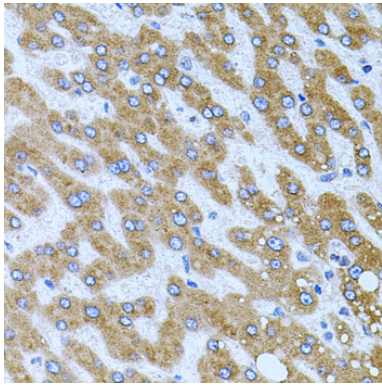
Images



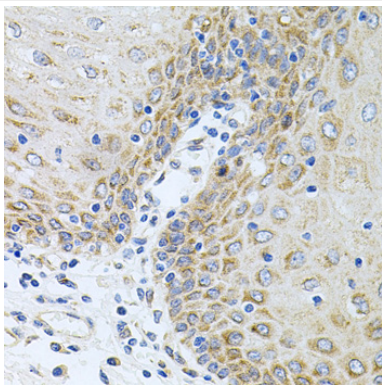
Western blot analysis of extracts of Rat lung, using CPM antibody.



Immunohistochemistry of paraffin-embedded human stomach using CPM antibody.



Immunohistochemistry of paraffin-embedded human liver damage using CPM antibody.



Immunohistochemistry of paraffin-embedded human esophagus using CPM antibody.

Background

The protein encoded by this gene is a membrane-bound arginine/lysine carboxypeptidase. Its expression is associated with monocyte to macrophage differentiation. This encoded protein contains hydrophobic regions at the amino and carboxy termini and has 6 potential asparagine-linked glycosylation sites. The active site residues of carboxypeptidases A and B are conserved in this protein. Three alternatively spliced transcript variants encoding the same protein have been described for this gene.

Note: This product is for in vitro research use only