

KLF4 Rabbit Polyclonal Antibody

Catalog No: #55006



Package Size: #55006-1 50ul #55006-2 100ul

Orders: order@signalwayantibody.com
Support: tech@signalwayantibody.com

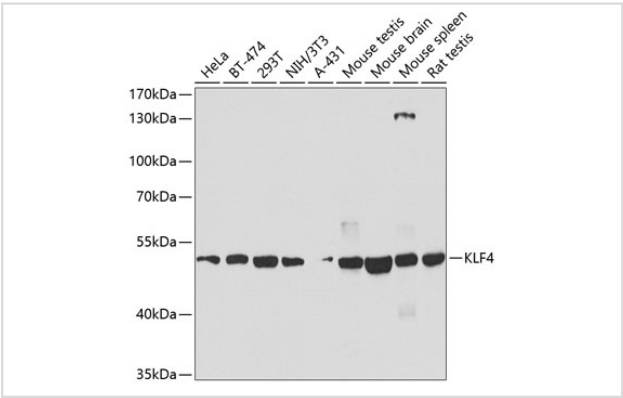
Description

Product Name	KLF4 Rabbit Polyclonal Antibody
Host Species	Rabbit
Clonality	Polyclonal
Isotype	IgG
Purification	Affinity purification
Applications	WB,IHC,IF
Species Reactivity	Human,Mouse,Rat
Immunogen Description	Recombinant fusion protein of human KLF4 (NP_004226.3).
Other Names	EZF;GKLF;KLF4
Accession No.	Swiss Prot:O43474GeneID:9314
Uniprot	O43474
Calculated MW	6kDa/12kDa/45kDa/51kDa/54kDa
SDS-PAGE MW	50kDa
Formulation	Buffer: PBS with 0.02% sodium azide,50% glycerol,pH7.3.
Storage	Store at -20°C. Avoid freeze / thaw cycles.

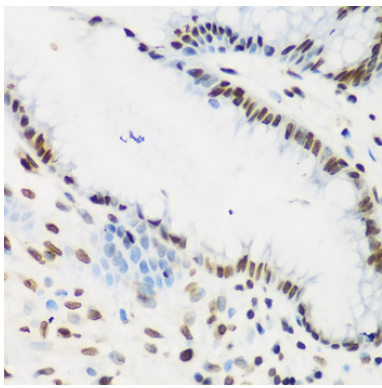
Application Details

WB 1:500 - 1:2000IHC 1:50 - 1:200IF 1:50 - 1:200

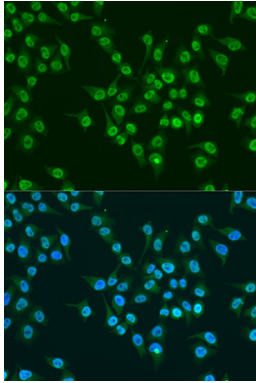
Images



Western blot analysis of extracts of various cell lines, using KLF4 at 1:1000 dilution.



Immunohistochemistry of paraffin-embedded human stomach cancer using KLF4 at dilution of 1:200 (40x lens).



Immunofluorescence analysis of U2OS cells using KLF4 at dilution of 1:100. Blue: DAPI for nuclear staining.

Background

This gene encodes a protein that belongs to the Kruppel family of transcription factors. The encoded zinc finger protein is required for normal development of the barrier function of skin. The encoded protein is thought to control the G1-to-S transition of the cell cycle following DNA damage by mediating the tumor suppressor gene p53. Mice lacking this gene have a normal appearance but lose weight rapidly, and die shortly after birth due to fluid evaporation resulting from compromised epidermal barrier function. Alternative splicing results in multiple transcript variants encoding different isoforms.

Note: This product is for in vitro research use only