

GOT2 Rabbit Polyclonal Antibody

Catalog No: #55038

Package Size: #55038-1 50ul #55038-2 100ul

Orders: order@signalwayantibody.comSupport: tech@signalwayantibody.com

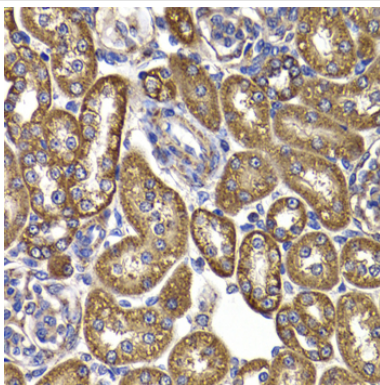
Description

Product Name	GOT2 Rabbit Polyclonal Antibody
Host Species	Rabbit
Clonality	Polyclonal
Isotype	IgG
Purification	Affinity purification
Applications	WB,IHC
Species Reactivity	Human,Mouse,Rat
Immunogen Description	Recombinant fusion protein of human GOT2 (NP_002071.2).
Other Names	GOT2;KAT4;KATIV;KYAT4;mitAAT
Accession No.	Swiss Prot:P00505GenelD:2806
Uniprot	P00505
Calculated MW	43kDa/47kDa
SDS-PAGE MW	48kDa
Formulation	Buffer: PBS with 0.02% sodium azide,50% glycerol,pH7.3.
Storage	Store at -20°C. Avoid freeze / thaw cycles.

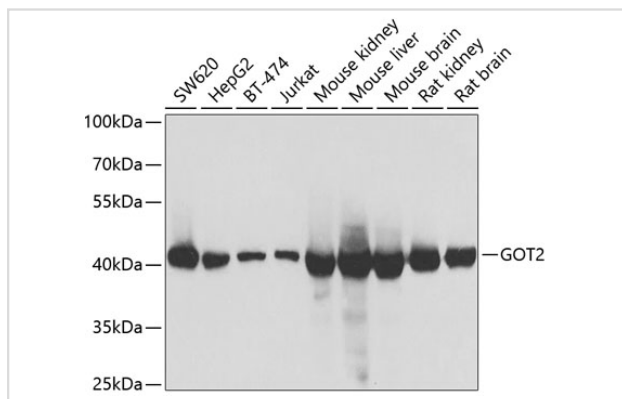
Application Details

WB□1:500 - 1:2000IHC□1:50 - 1:200

Images



Immunohistochemistry of paraffin-embedded rat kidney using GOT2 at dilution of 1:100 (40x lens).



Western blot analysis of extracts of various cell lines, using GOT2 at 1:1000 dilution.

Background

Glutamic-oxaloacetic transaminase is a pyridoxal phosphate-dependent enzyme which exists in cytoplasmic and inner-membrane mitochondrial forms, GOT1 and GOT2, respectively. GOT plays a role in amino acid metabolism and the urea and tricarboxylic acid cycles. The two enzymes are homodimeric and show close homology. Two transcript variants encoding different isoforms have been found for this gene.

Note: This product is for in vitro research use only