

# STAT4 Rabbit Polyclonal Antibody

Catalog No: #55067



Package Size: #55067-1 50ul #55067-2 100ul

Orders: [order@signalwayantibody.com](mailto:order@signalwayantibody.com)  
Support: [tech@signalwayantibody.com](mailto:tech@signalwayantibody.com)

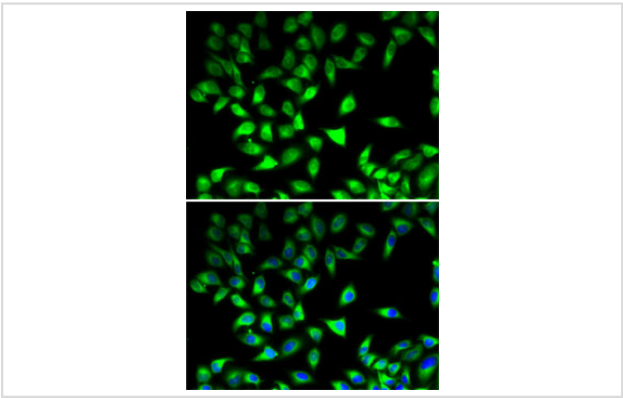
## Description

Product Name	STAT4 Rabbit Polyclonal Antibody
Host Species	Rabbit
Clonality	Polyclonal
Isotype	IgG
Purification	Affinity purification
Applications	WB,IHC,IF
Species Reactivity	Human,Mouse,Rat
Immunogen Description	Recombinant fusion protein of human STAT4 (NP_003142.1).
Other Names	STAT4;SLEB11
Accession No.	Swiss Prot:Q14765GeneID:6775
Uniprot	Q14765
Calculated MW	85kDa
SDS-PAGE MW	76kDa
Formulation	Buffer: PBS with 0.02% sodium azide,50% glycerol,pH7.3.
Storage	Store at -20°C. Avoid freeze / thaw cycles.

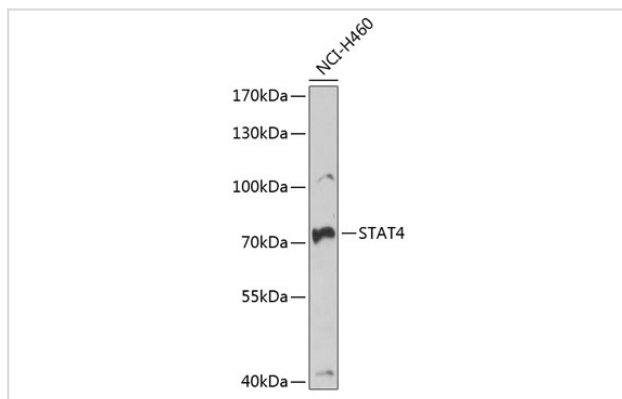
## Application Details

WB 1:500 - 1:2000IHC 1:50 - 1:200IF 1:50 - 1:100

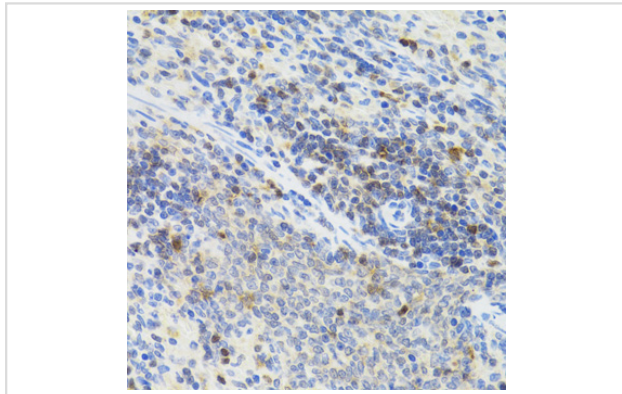
## Images



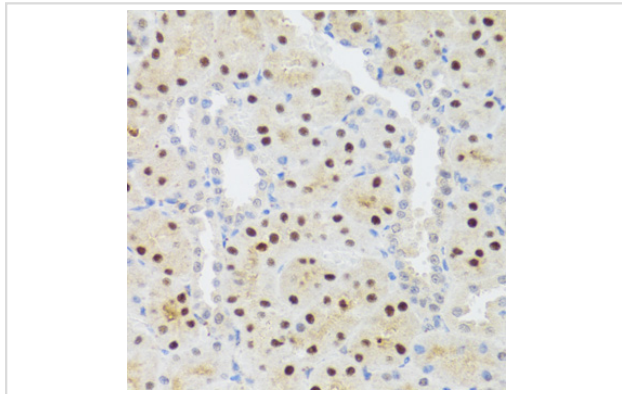
Immunofluorescence analysis of MCF7 cells using STAT4 .  
Blue: DAPI for nuclear staining.



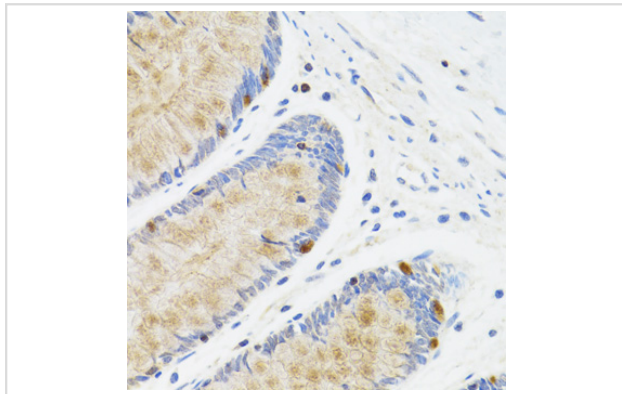
Western blot analysis of extracts of NCI-H460 cells, using STAT4 at 1:1000 dilution.



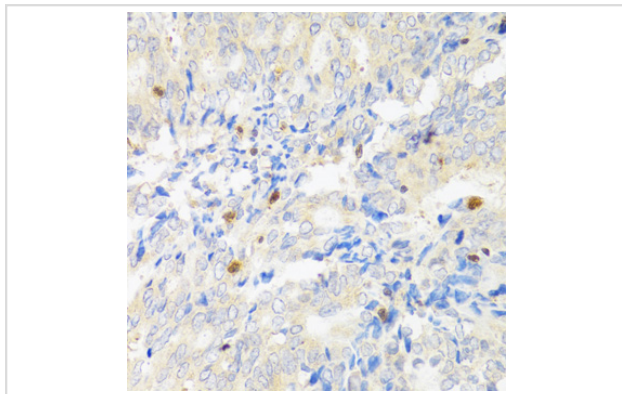
Immunohistochemistry of paraffin-embedded rat spleen using STAT4 at dilution of 1:100 (40x lens).



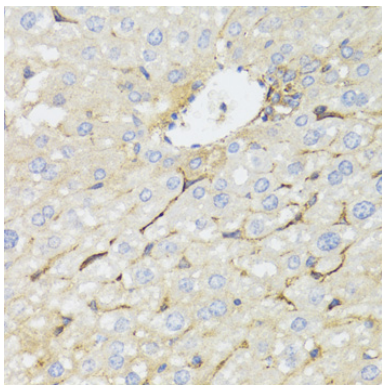
Immunohistochemistry of paraffin-embedded rat kidney using STAT4 at dilution of 1:100 (40x lens).



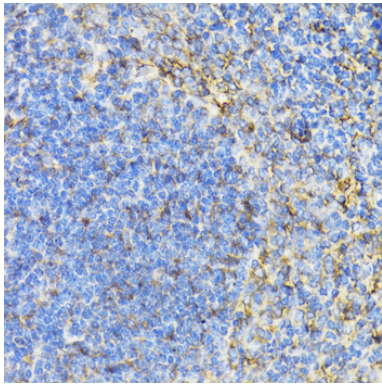
Immunohistochemistry of paraffin-embedded human rectum using STAT4 at dilution of 1:100 (40x lens).



Immunohistochemistry of paraffin-embedded human rectal cancer using STAT4 at dilution of 1:100 (40x lens).



Immunohistochemistry of paraffin-embedded mouse liver using STAT4 at dilution of 1:100 (40x lens).



Immunohistochemistry of paraffin-embedded mouse spleen using STAT4 at dilution of 1:100 (40x lens).

## Background

The protein encoded by this gene is a member of the STAT family of transcription factors. In response to cytokines and growth factors, STAT family members are phosphorylated by the receptor associated kinases, and then form homo- or heterodimers that translocate to the cell nucleus where they act as transcription activators. This protein is essential for mediating responses to IL12 in lymphocytes, and regulating the differentiation of T helper cells. Mutations in this gene may be associated with systemic lupus erythematosus and rheumatoid arthritis. Alternate splicing results in multiple transcript variants that encode the same protein.

Note: This product is for in vitro research use only