

UBE2G1 Rabbit Polyclonal Antibody

Catalog No: #55071

Package Size: #55071-1 50ul #55071-2 100ul

Orders: order@signalwayantibody.comSupport: tech@signalwayantibody.com

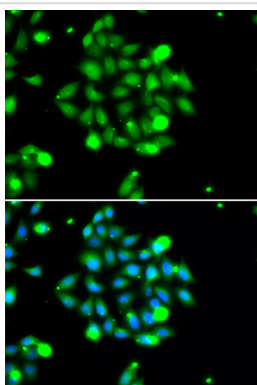
Description

Product Name	UBE2G1 Rabbit Polyclonal Antibody
Host Species	Rabbit
Clonality	Polyclonal
Isotype	IgG
Purification	Affinity purification
Applications	WB,IF
Species Reactivity	Human,Mouse,Rat
Immunogen Description	Recombinant fusion protein of human UBE2G1 (NP_003333.1).
Other Names	UBE2G1;E217K;UBC7;UBE2G
Accession No.	Swiss Prot:P62253GenelD:7326
Uniprot	P62253
Calculated MW	19kDa
Formulation	Buffer: PBS with 0.02% sodium azide,50% glycerol,pH7.3.
Storage	Store at -20°C. Avoid freeze / thaw cycles.

Application Details

WB□1:500 - 1:2000IF□1:50 - 1:100

Images



Immunofluorescence analysis of U2OS cells using UBE2G1 .
Blue: DAPI for nuclear staining.

Background

The modification of proteins with ubiquitin is an important cellular mechanism for targeting abnormal or short-lived proteins for degradation. Ubiquitination involves at least three classes of enzymes: ubiquitin-activating enzymes, or E1s, ubiquitin-conjugating enzymes, or E2s, and ubiquitin-protein ligases, or E3s. This gene encodes a member of the E2 ubiquitin-conjugating enzyme family and catalyzes the covalent attachment of ubiquitin to other proteins. The protein may be involved in degradation of muscle-specific proteins.

Note: This product is for in vitro research use only