

SH3GLB1 Rabbit Polyclonal Antibody

Catalog No: #55120

Package Size: #55120-1 50ul #55120-2 100ul

Orders: order@signalwayantibody.comSupport: tech@signalwayantibody.com

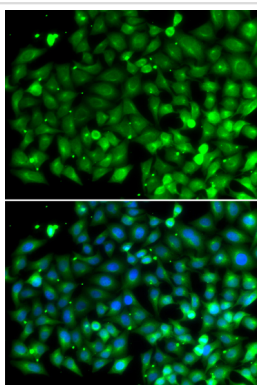
Description

Product Name	SH3GLB1 Rabbit Polyclonal Antibody
Host Species	Rabbit
Clonality	Polyclonal
Isotype	IgG
Purification	Affinity purification
Applications	WB,IF
Species Reactivity	Human
Immunogen Description	Recombinant fusion protein of human SH3GLB1 (NP_057093.1).
Other Names	SH3GLB1;Bif-1;CGI-61;PPP1R70;dJ612B15.2
Accession No.	Swiss Prot:Q9Y371GeneID:51100
Uniprot	Q9Y371
Calculated MW	29kDa/40kDa/43kDa
Formulation	Buffer: PBS with 0.02% sodium azide,50% glycerol,pH7.3.
Storage	Store at -20°C. Avoid freeze / thaw cycles.

Application Details

WB□1:500 - 1:2000IF□1:50 - 1:100

Images



Immunofluorescence analysis of A549 cells using SH3GLB1 .
Blue: DAPI for nuclear staining.

Background

This gene encodes a SRC homology 3 domain-containing protein. The encoded protein interacts with the proapoptotic member of the Bcl-2 family, Bcl-2-associated X protein (Bax) and may be involved in regulating apoptotic signaling pathways. This protein may also be involved in maintaining mitochondrial morphology. Alternate splicing results in multiple transcript variants.

Note: This product is for in vitro research use only