

DPP8 Rabbit Polyclonal Antibody

Catalog No: #55125



Package Size: #55125-1 50ul #55125-2 100ul

Orders: order@signalwayantibody.com  
Support: tech@signalwayantibody.com

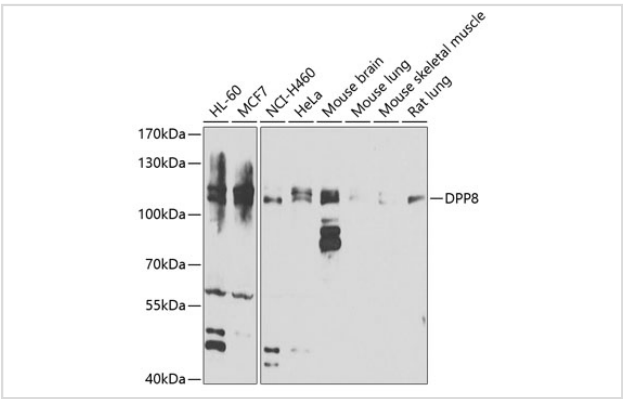
Description

Product Name	DPP8 Rabbit Polyclonal Antibody
Host Species	Rabbit
Clonality	Polyclonal
Isotype	IgG
Purification	Affinity purification
Applications	WB
Species Reactivity	Human,Mouse,Rat
Immunogen Description	Recombinant fusion protein of human DPP8 (NP_932065.1).
Other Names	DPP8;DP8;DPRP-1;DPRP1;MST097;MSTP097;MSTP135;MSTP141
Accession No.	Uniprot:Q6V1X1GeneID:54878
Uniprot	Q6V1X1
GeneID	54878
Calculated MW	83kDa/89kDa/97kDa/101kDa/103kDa
SDS-PAGE MW	103kDa
Formulation	PBS with 0.02% sodium azide,50% glycerol,pH7.3.
Storage	Store at -20°C. Avoid freeze / thaw cycles.

Application Details

WB 1:500 - 1:2000

Images



Western blot analysis of extracts of various cell lines, using DPP8 antibody.

Background

This gene encodes a member of the peptidase S9B family, a small family of dipeptidyl peptidases that are able to cleave peptide substrates at a prolyl bond. The encoded protein shares similarity with dipeptidyl peptidase IV in that it is ubiquitously expressed, and hydrolyzes the same substrates. These similarities suggest that, like dipeptidyl peptidase IV, this protein may play a role in T-cell activation and immune function. Alternatively spliced

transcript variants encoding different isoforms have been described.

---

Note: This product is for in vitro research use only