

ALS2 Rabbit Polyclonal Antibody

Catalog No: #55128



Package Size: #55128-1 50ul #55128-2 100ul

Orders: order@signalwayantibody.com
Support: tech@signalwayantibody.com

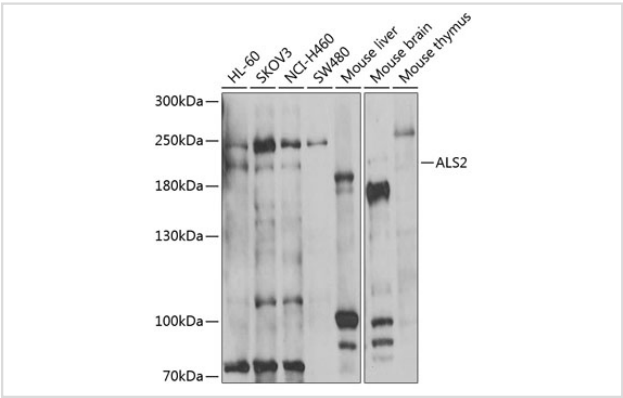
Description

Product Name	ALS2 Rabbit Polyclonal Antibody
Host Species	Rabbit
Clonality	Polyclonal
Isotype	IgG
Purification	Affinity purification
Applications	WB,IF
Species Reactivity	Human,Mouse,Rat
Immunogen Description	Recombinant fusion protein of human ALS2 (NP_065970.2).
Other Names	ALS2;ALS2CR6;ALSJ;IAHSP;PLSJ;alsin
Accession No.	Swiss Prot:Q96Q42GeneID:57679
Uniprot	Q96Q42
Calculated MW	42kDa/86kDa/183kDa
SDS-PAGE MW	184kDa
Formulation	Buffer: PBS with 0.02% sodium azide,50% glycerol,pH7.3.
Storage	Store at -20°C. Avoid freeze / thaw cycles.

Application Details

WB 1:500 - 1:2000IF 1:50 - 1:200

Images



Western blot analysis of extracts of various cell lines, using ALS2 at 1:1000 dilution.

Background

The protein encoded by this gene contains an ATS1/RCC1-like domain, a RhoGEF domain, and a vacuolar protein sorting 9 (VPS9) domain, all of which are guanine-nucleotide exchange factors that activate members of the Ras superfamily of GTPases. The protein functions as a guanine nucleotide exchange factor for the small GTPase RAB5. The protein localizes with RAB5 on early endosomal compartments, and functions as a modulator for endosomal dynamics. Mutations in this gene result in several forms of juvenile lateral sclerosis and infantile-onset ascending spastic

paralysis. Multiple transcript variants encoding different isoforms have been found for this gene.

Note: This product is for in vitro research use only