

PSMB8 Rabbit Polyclonal Antibody

Catalog No: #55187



Package Size: #55187-1 50ul #55187-2 100ul

Orders: [order@signalwayantibody.com](mailto:order@signalwayantibody.com)  
Support: [tech@signalwayantibody.com](mailto:tech@signalwayantibody.com)

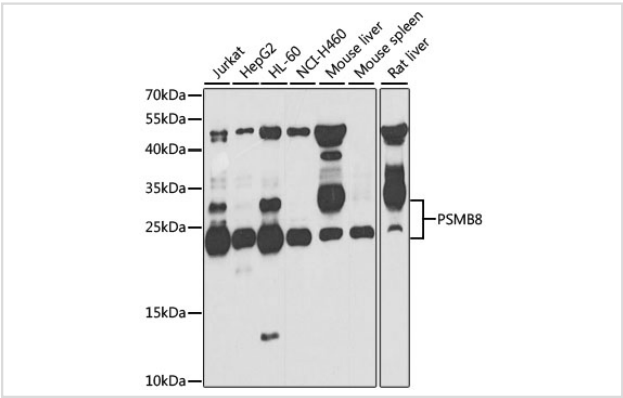
Description

Product Name	PSMB8 Rabbit Polyclonal Antibody
Host Species	Rabbit
Clonality	Polyclonal
Isotype	IgG
Purification	Affinity purification
Applications	WB,IHC,IF
Species Reactivity	Human,Mouse,Rat
Immunogen Description	Recombinant fusion protein of human PSMB8 (NP_004150.1).
Other Names	PSMB8;ALDD;D6S216;D6S216E;JMP;LMP7;NKJO;PSMB5i;RING10
Accession No.	Swiss Prot:P28062GenelD:5696
Uniprot	P28062
Calculated MW	29kDa/30kDa
SDS-PAGE MW	23-28kDa
Formulation	Buffer: PBS with 0.02% sodium azide,50% glycerol,pH7.3.
Storage	Store at -20°C. Avoid freeze / thaw cycles.

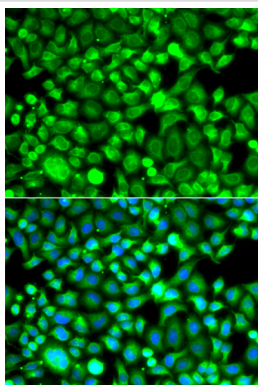
Application Details

WB1:500 - 1:2000IHC1:50 - 1:200IF1:50 - 1:200

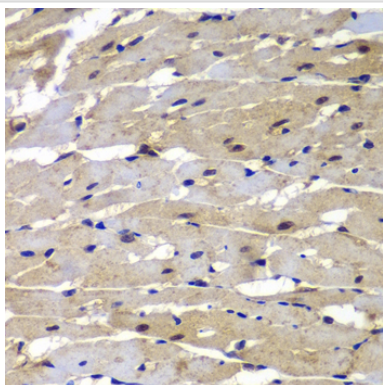
Images



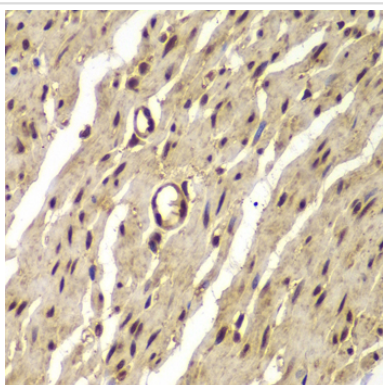
Western blot analysis of extracts of various cell lines, using PSMB8 at 1:1000 dilution.



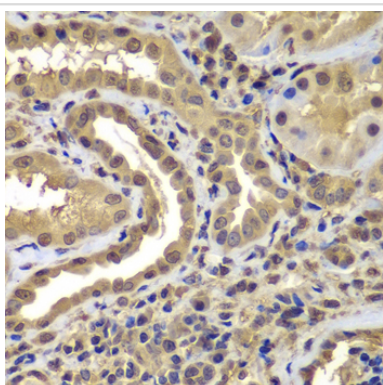
Immunofluorescence analysis of A549 cells using PSMB8 .  
Blue: DAPI for nuclear staining.



Immunohistochemistry of paraffin-embedded rat heart using PSMB8 at dilution of 1:100 (40x lens).



Immunohistochemistry of paraffin-embedded human colon using PSMB8 at dilution of 1:100 (40x lens).



Immunohistochemistry of paraffin-embedded human kidney using PSMB8 at dilution of 1:100 (40x lens).

## Background

The proteasome is a multicatalytic proteinase complex with a highly ordered ring-shaped 20S core structure. The core structure is composed of 4 rings of 28 non-identical subunits; 2 rings are composed of 7 alpha subunits and 2 rings are composed of 7 beta subunits. Proteasomes are distributed throughout eukaryotic cells at a high concentration and cleave peptides in an ATP/ubiquitin-dependent process in a non-lysosomal pathway. An essential function of a modified proteasome, the immunoproteasome, is the processing of class I MHC peptides. This gene encodes a member of the proteasome B-type family, also known as the T1B family, that is a 20S core beta subunit. This gene is located in the class II region of the MHC (major histocompatibility complex). Expression of this gene is induced by gamma interferon and this gene product replaces catalytic subunit 3 (proteasome beta 5 subunit) in the immunoproteasome. Proteolytic processing is required to generate a mature subunit. Two alternative transcripts encoding two

isoforms have been identified; both isoforms are processed to yield the same mature subunit.

---

Note: This product is for in vitro research use only