

CSRP2BP Rabbit Polyclonal Antibody

Catalog No: #55199



Package Size: #55199-1 50ul #55199-2 100ul

Orders: order@signalwayantibody.com
Support: tech@signalwayantibody.com

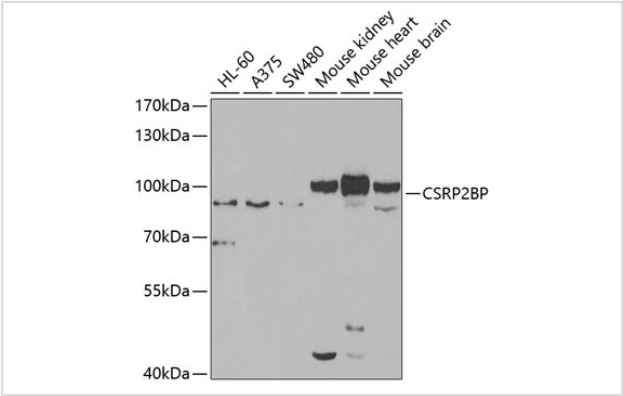
Description

Product Name	CSRP2BP Rabbit Polyclonal Antibody
Host Species	Rabbit
Clonality	Polyclonal
Isotype	IgG
Purification	Affinity purification
Applications	WB,IF
Species Reactivity	Human,Mouse
Immunogen Description	Recombinant fusion protein of human CSRP2BP (NP_065397.3).
Other Names	KAT14;ATAC2;CRP2BP;CSRP2BP;PRO1194;dJ717M23.1
Accession No.	Uniprot:Q9H8E8GeneID:57325
Uniprot	Q9H8E8
GeneID	57325
Calculated MW	74kDa/88kDa
SDS-PAGE MW	89kDa
Formulation	PBS with 0.02% sodium azide,50% glycerol,pH7.3.
Storage	Store at -20°C. Avoid freeze / thaw cycles.

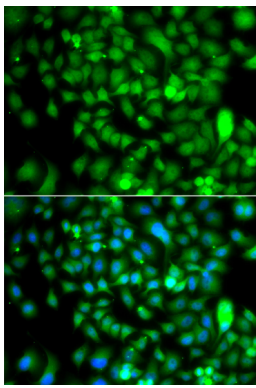
Application Details

WB 1:500 - 1:2000IF 1:50 - 1:200

Images



Western blot analysis of extracts of various cell lines, using CSRP2BP antibody.



Immunofluorescence analysis of A549 cells using CSR2BP antibody.

Background

CSR2P is a protein containing two LIM domains, which are double zinc finger motifs found in proteins of diverse function. CSR2P and some related proteins are thought to act as protein adapters, bridging two or more proteins to form a larger protein complex. The protein encoded by this gene binds to one of the LIM domains of CSR2P and contains an acetyltransferase domain. Although the encoded protein has been detected in the cytoplasm, it is predominantly a nuclear protein. Alternatively spliced transcript variants have been described.

Note: This product is for in vitro research use only