

# ARF4 Rabbit Polyclonal Antibody

Catalog No: #55272



Package Size: #55272-1 50ul #55272-2 100ul

Orders: [order@signalwayantibody.com](mailto:order@signalwayantibody.com)  
Support: [tech@signalwayantibody.com](mailto:tech@signalwayantibody.com)

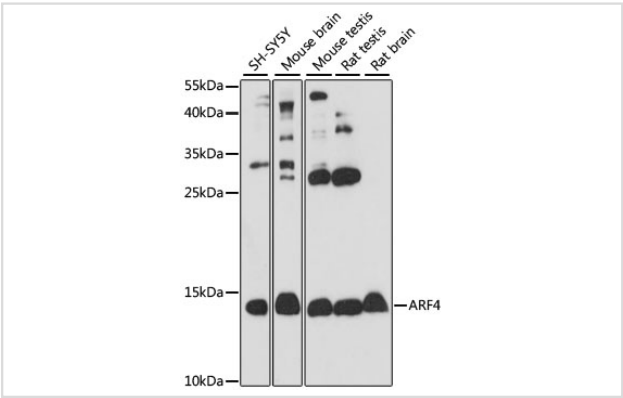
## Description

Product Name	ARF4 Rabbit Polyclonal Antibody
Host Species	Rabbit
Clonality	Polyclonal
Isotype	IgG
Purification	Affinity purification
Applications	WB,IF
Species Reactivity	Human,Mouse,Rat
Immunogen Description	Recombinant fusion protein of human ARF4 (NP_001651.1).
Other Names	ARF4;ARF2
Accession No.	Swiss Prot:P18085GenelD:378
Uniprot	P18085
Calculated MW	20kDa
SDS-PAGE MW	14kDa
Formulation	Buffer: PBS with 0.02% sodium azide,50% glycerol,pH7.3.
Storage	Store at -20°C. Avoid freeze / thaw cycles.

## Application Details

WB 1:500 - 1:2000IF 1:50 - 1:200

## Images



Western blot analysis of extracts of various cell lines, using ARF4 at 1:1000 dilution.

## Background

This gene is a member of the human ARF gene family whose members encode small guanine nucleotide-binding proteins that stimulate the ADP-ribosyltransferase activity of cholera toxin and play a role in vesicular trafficking and as activators of phospholipase D. The gene products include 5 ARF proteins and 11 ARF-like proteins and constitute one family of the RAS superfamily. The ARF proteins are categorized as class I, class II and class III; this gene is a class II member. The members of each class share a common gene organization. The ARF4 gene spans approximately 12kb

and contains six exons and five introns. This gene is the most divergent member of the human ARFs. Conflicting map positions at 3p14 or 3p21 have been reported for this gene.

---

Note: This product is for in vitro research use only