

BAAT Rabbit Polyclonal Antibody

Catalog No: #55273



Package Size: #55273-1 50ul #55273-2 100ul

Orders: order@signalwayantibody.com
Support: tech@signalwayantibody.com

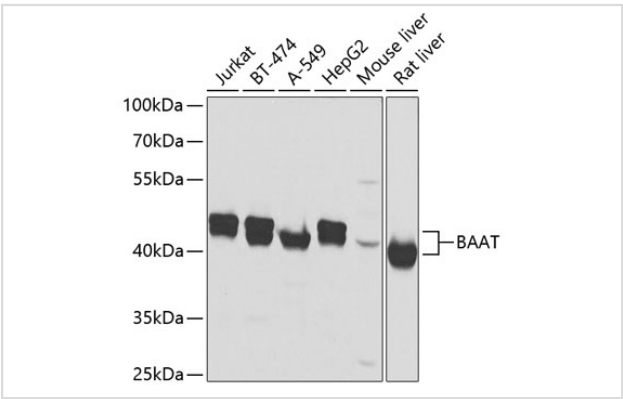
Description

Product Name	BAAT Rabbit Polyclonal Antibody
Host Species	Rabbit
Clonality	Polyclonal
Isotype	IgG
Purification	Affinity purification
Applications	WB,IHC,IF
Species Reactivity	Human,Mouse,Rat
Immunogen Description	Recombinant fusion protein of human BAAT (NP_001692.1).
Other Names	BAAT;BACAT;BAT
Accession No.	Uniprot:Q14032GenelD:570
Uniprot	Q14032
GenelD	570
Calculated MW	46kDa
SDS-PAGE MW	40-46kDa
Formulation	PBS with 0.02% sodium azide,50% glycerol,pH7.3.
Storage	Store at -20°C. Avoid freeze / thaw cycles.

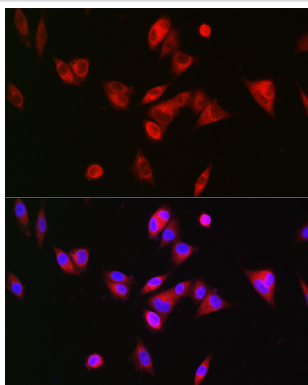
Application Details

WB1:500 - 1:2000IHC1:50 - 1:200IF1:50 - 1:200

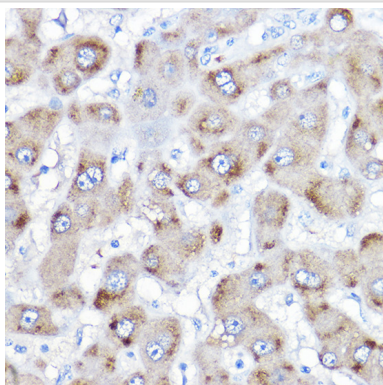
Images



Western blot analysis of extracts of various cell lines, using BAAT antibody.



Immunofluorescence analysis of Hep G2 cells using BAAT Rabbit pAb.



Immunohistochemistry of paraffin-embedded human liver using BAAT Rabbit pAb.

Background

The protein encoded by this gene is a liver enzyme that catalyzes the transfer of C24 bile acids from the acyl-CoA thioester to either glycine or taurine, the second step in the formation of bile acid-amino acid conjugates. The bile acid conjugates then act as a detergent in the gastrointestinal tract, which enhances lipid and fat-soluble vitamin absorption. Defects in this gene are a cause of familial hypercholanemia (FHCA). Two transcript variants encoding the same protein have been found for this gene.

Note: This product is for in vitro research use only