

UBE2A Rabbit Polyclonal Antibody

Catalog No: #55311



Package Size: #55311-1 50ul #55311-2 100ul

Orders: order@signalwayantibody.com
Support: tech@signalwayantibody.com

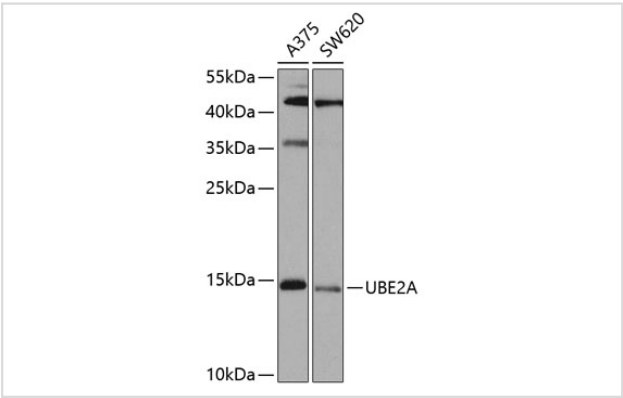
Description

Product Name	UBE2A Rabbit Polyclonal Antibody
Host Species	Rabbit
Clonality	Polyclonal
Isotype	IgG
Purification	Affinity purification
Applications	WB,IHC
Species Reactivity	Human,Mouse,Rat
Immunogen Description	Recombinant fusion protein of human UBE2A (NP_003327.2).
Other Names	UBE2A;HHR6A;MRXS30;MRXSN;RAD6A;UBC2
Accession No.	Swiss Prot:P49459GenelD:7319
Uniprot	P49459
Calculated MW	8kDa/13kDa/17kDa
SDS-PAGE MW	14kDa
Formulation	Buffer: PBS with 0.02% sodium azide,50% glycerol,pH7.3.
Storage	Store at -20°C. Avoid freeze / thaw cycles.

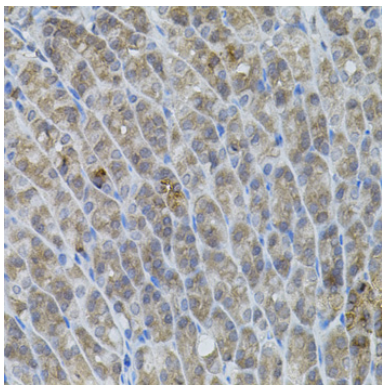
Application Details

WB 1:500 - 1:2000IHC 1:50 - 1:100

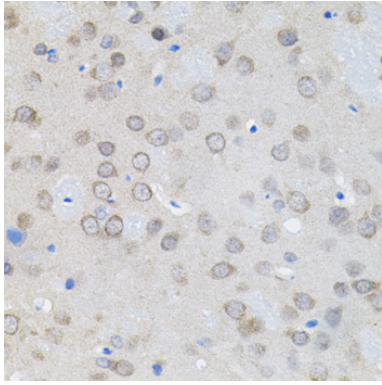
Images



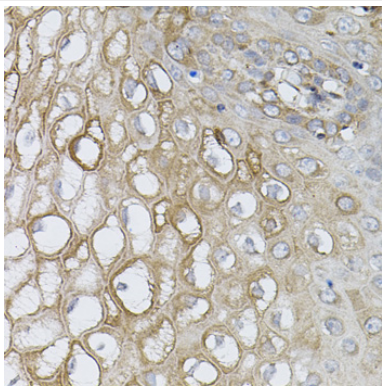
Western blot analysis of extracts of various cell lines, using UBE2A at 1:1000 dilution.



Immunohistochemistry of paraffin-embedded mouse stomach using UBE2A (40x lens).



Immunohistochemistry of paraffin-embedded rat brain using UBE2A (40x lens).



Immunohistochemistry of paraffin-embedded human esophagus using UBE2A (40x lens).

Background

The modification of proteins with ubiquitin is an important cellular mechanism for targeting abnormal or short-lived proteins for degradation. Ubiquitination involves at least three classes of enzymes: ubiquitin-activating enzymes, ubiquitin-conjugating enzymes, and ubiquitin-protein ligases. This gene encodes a member of the E2 ubiquitin-conjugating enzyme family. This enzyme is required for post-replicative DNA damage repair, and may play a role in transcriptional regulation. Mutations in this gene are associated with mental retardation. Alternative splicing results in multiple transcript variants.

Note: This product is for in vitro research use only