

Bcl-2 Antibody

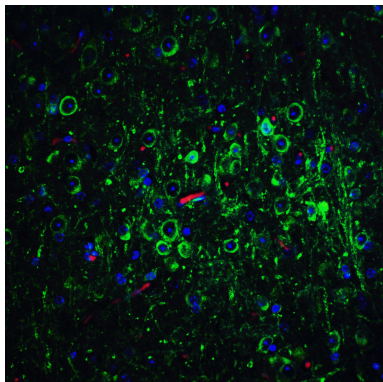
Catalog No: #24245

Orders: order@signalwayantibody.comSupport: tech@signalwayantibody.com

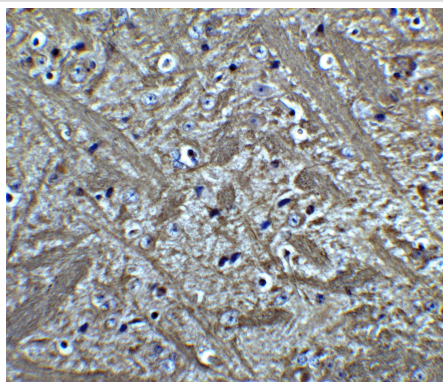
Description

Product Name	Bcl-2 Antibody
Host Species	Rabbit
Clonality	Polyclonal
Purification	Bcl-2 Antibody is affinity chromatography purified via peptide column.
Applications	ELISA WB IHC
Species Reactivity	Hu Ms Rt
Immunogen Type	Peptide
Immunogen Description	Raised against a peptide corresponding to 15 amino acids near the N terminus of human Bcl-2.
Target Name	Bcl-2
Accession No.	Swiss-Prot:P10415Gene ID:596
Uniprot	P10415
GeneID	596;
Concentration	1mg/ml
Formulation	Supplied in PBS containing 0.02% sodium azide.
Storage	Can be stored at -20°C, stable for one year. As with all antibodies care should be taken to avoid repeated freeze thaw cycles. Antibodies should not be exposed to prolonged high temperatures.

Images



Immunofluorescence of Bcl 2 in mouse brain tissue with Bcl 2 Antibody at 20 µg/mL.



Immunohistochemistry of Bcl 2 in mouse brain tissue with Bcl 2 Antibody at 5 µg/mL.

Background

Apoptosis plays a major role in normal organism development, tissue homeostasis, and removal of damaged cells. Disruption of this process has been implicated in a variety of diseases such as cancer. Bcl-2 is the founding member of a family of over 20 proteins that are critical regulators of apoptosis. These can be divided into two classes: those that inhibit apoptosis and those that promote cell death. Bcl-2 is an inner mitochondrial membrane protein that inhibits apoptosis. It is thought to act by interacting with pro-apoptotic Bcl-2 family members such as Bak and Bad. Overexpression of Bcl-2 has been linked to human cancers such as B-cell lymphoma and prostate cancer.

Note: This product is for in vitro research use only