

ANGPT1 Rabbit Polyclonal Antibody

Catalog No: #29584



Package Size: #29584-1 50ul #29584-2 100ul

Orders: order@signalwayantibody.com
Support: tech@signalwayantibody.com

Description

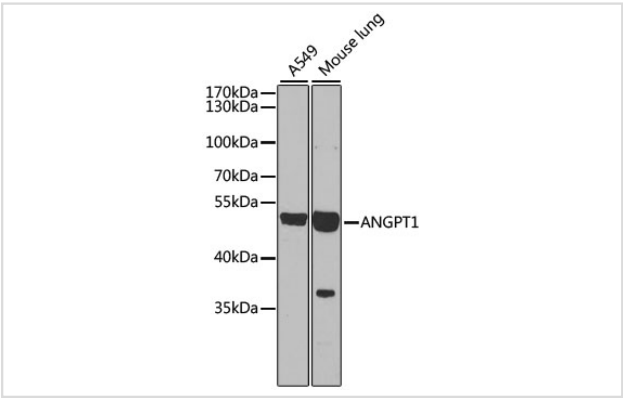
Product Name	ANGPT1 Rabbit Polyclonal Antibody
Host Species	Rabbit
Clonality	Polyclonal
Isotype	IgG
Purification	Affinity purification
Applications	WB,IHC
Species Reactivity	Human,Mouse,Rat
Immunogen Description	Recombinant fusion protein of human ANGPT1 (NP_001186788.1).
Other Names	ANGPT1;AGP1;AGPT;ANG1
Accession No.	Swiss Prot:Q15389GeneID:284
Calculated MW	57kDa
SDS-PAGE MW	51kDa
Formulation	Buffer: PBS with 0.02% sodium azide,50% glycerol,pH7.3.
Storage	Store at -20°C. Avoid freeze / thaw cycles.

Application Details

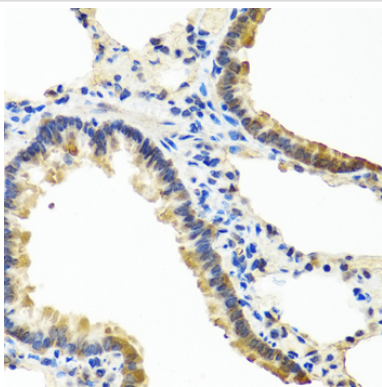
WB 1:500 - 1:2000

IHC 1:50 - 1:100

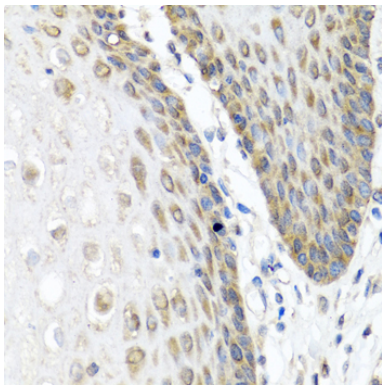
Images



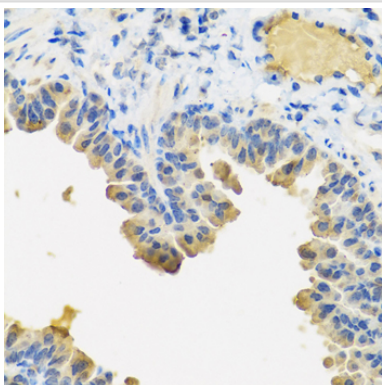
Western blot analysis of extracts of various cell lines, using ANGPT1 at 1:1000 dilution.



Immunohistochemistry of paraffin-embedded rat lung using ANGPT1 at dilution of 1:100 (40x lens).



Immunohistochemistry of paraffin-embedded human esophagus using ANGPT1 at dilution of 1:100 (40x lens).



Immunohistochemistry of paraffin-embedded mouse lung using ANGPT1 at dilution of 1:100 (40x lens).

Background

This gene encodes a secreted glycoprotein that belongs to the angiopoietin family. Members of this family play important roles in vascular development and angiogenesis. All angiopoietins bind with similar affinity to an endothelial cell-specific tyrosine-protein kinase receptor. The protein encoded by this gene is a secreted glycoprotein that activates the receptor by inducing its tyrosine phosphorylation. It plays a critical role in mediating reciprocal interactions between the endothelium and surrounding matrix and mesenchyme and inhibits endothelial permeability. The protein also contributes to blood vessel maturation and stability, and may be involved in early development of the heart. Alternative splicing results in multiple transcript variants encoding distinct isoforms.

Note: This product is for in vitro research use only