

# ATP5O Rabbit Polyclonal Antibody

Catalog No: #55423



Package Size: #55423-1 50ul #55423-2 100ul

Orders: [order@signalwayantibody.com](mailto:order@signalwayantibody.com)  
Support: [tech@signalwayantibody.com](mailto:tech@signalwayantibody.com)

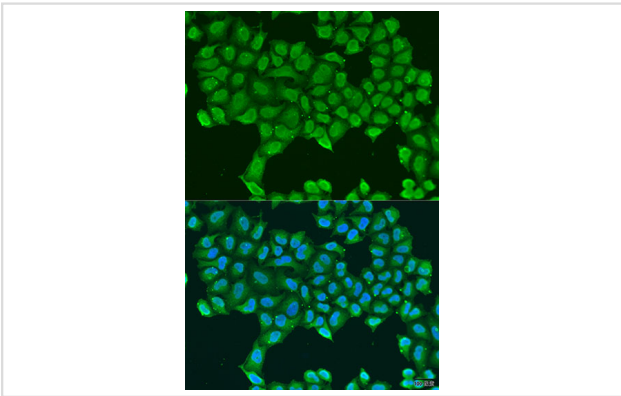
## Description

Product Name	ATP5O Rabbit Polyclonal Antibody
Host Species	Rabbit
Clonality	Polyclonal
Isotype	IgG
Purification	Affinity purification
Applications	WB,IHC,IF
Species Reactivity	Human,Mouse,Rat
Immunogen Description	Recombinant fusion protein of human ATP5O (NP_001688.1).
Other Names	ATP5O;ATPO;HMC08D05;OSCP
Accession No.	Swiss Prot:P48047GenelD:539
Uniprot	P48047
Calculated MW	23kDa
SDS-PAGE MW	23kDa
Formulation	Buffer: PBS with 0.02% sodium azide,50% glycerol,pH7.3.
Storage	Store at -20°C. Avoid freeze / thaw cycles.

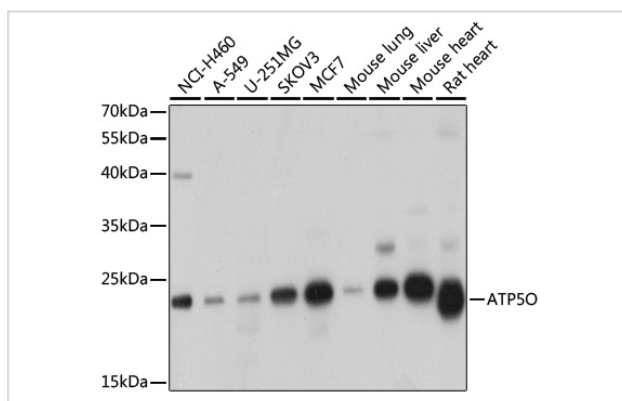
## Application Details

WB 1:500 - 1:2000IHC 1:100 - 1:200IF 1:50 - 1:200

## Images



Immunofluorescence analysis of U2OS cells using ATP5O at dilution of 1:100. Blue: DAPI for nuclear staining.



Western blot analysis of extracts of various cell lines, using ATP5O at 1:1000 dilution.

## Background

The protein encoded by this gene is a component of the F-type ATPase found in the mitochondrial matrix. F-type ATPases are composed of a catalytic core and a membrane proton channel. The encoded protein appears to be part of the connector linking these two components and may be involved in transmission of conformational changes or proton conductance.

Note: This product is for in vitro research use only