

# CETN3 Rabbit Polyclonal Antibody

Catalog No: #55426



Package Size: #55426-1 50ul #55426-2 100ul

Orders: [order@signalwayantibody.com](mailto:order@signalwayantibody.com)  
Support: [tech@signalwayantibody.com](mailto:tech@signalwayantibody.com)

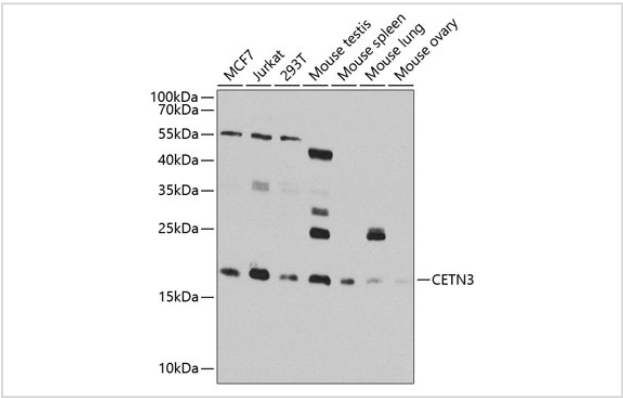
## Description

Product Name	CETN3 Rabbit Polyclonal Antibody
Host Species	Rabbit
Clonality	Polyclonal
Isotype	IgG
Purification	Affinity purification
Applications	WB,IHC,IF
Species Reactivity	Human,Mouse,Rat
Immunogen Description	Recombinant fusion protein of human CETN3 (NP_004356.2).
Other Names	CETN3;CDC31;CEN3;centrin-3
Accession No.	Swiss Prot:O15182GeneID:1070
Uniprot	O15182
Calculated MW	19kDa
SDS-PAGE MW	20kDa
Formulation	Buffer: PBS with 0.02% sodium azide,50% glycerol,pH7.3.
Storage	Store at -20°C. Avoid freeze / thaw cycles.

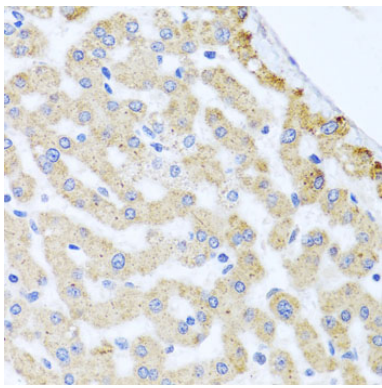
## Application Details

WB 1:500 - 1:2000IHC 1:50 - 1:100IF 1:50 - 1:200

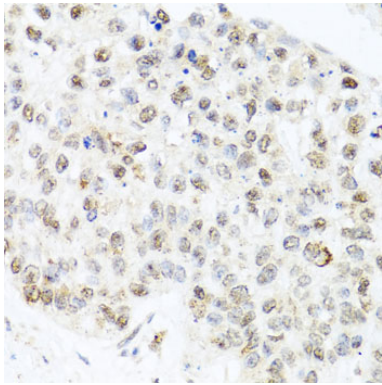
## Images



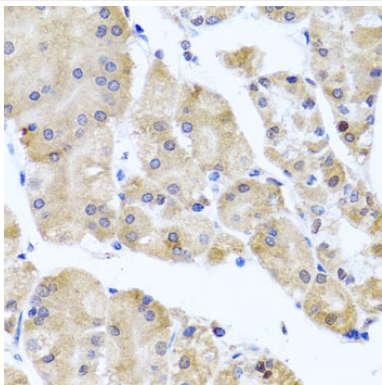
Western blot analysis of extracts of various cell lines, using CETN3 at 1:1000 dilution.



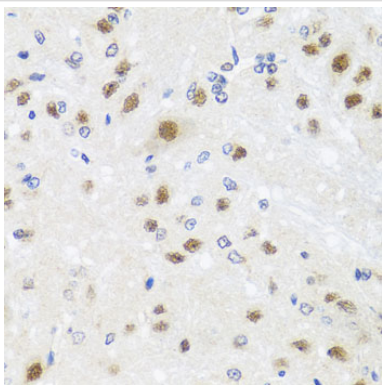
Immunohistochemistry of paraffin-embedded human liver damage using CETN3 at dilution of 1:100 (40x lens).



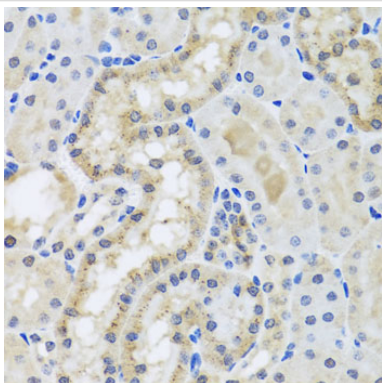
Immunohistochemistry of paraffin-embedded human lung cancer using CETN3 at dilution of 1:100 (40x lens).



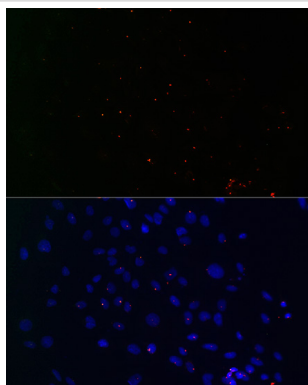
Immunohistochemistry of paraffin-embedded human stomach using CETN3 at dilution of 1:100 (40x lens).



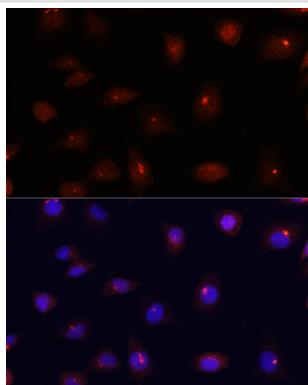
Immunohistochemistry of paraffin-embedded rat brain using CETN3 at dilution of 1:100 (40x lens).



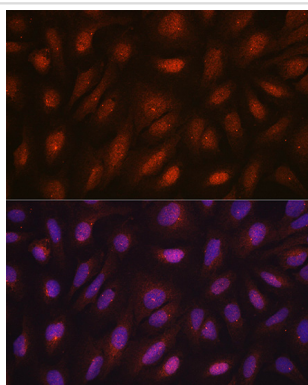
Immunohistochemistry of paraffin-embedded mouse kidney using CETN3 at dilution of 1:100 (40x lens).



Immunofluorescence analysis of C6 cells using CETN3 at dilution of 1:100. Blue: DAPI for nuclear staining.



Immunofluorescence analysis of L929 cells using CETN3 at dilution of 1:100. Blue: DAPI for nuclear staining.



Immunofluorescence analysis of U2OS cells using CETN3 at dilution of 1:100. Blue: DAPI for nuclear staining.

## Background

The protein encoded by this gene contains four EF-hand calcium binding domains, and is a member of the centrin protein family. Centrins are evolutionarily conserved proteins similar to the CDC31 protein of *S. cerevisiae*. Yeast CDC31 is located at the centrosome of interphase and mitotic cells, where it plays a fundamental role in centrosome duplication and separation. Multiple forms of the proteins similar to the yeast centrin have been identified in human and other mammalian cells, some of which have been shown to be associated with centrosome fractions. This protein appears to be one of the most abundant centrins associated with centrosome, which suggests a similar function to its yeast counterpart. Alternatively spliced transcript variants encoding different isoforms have been found for this gene.

Note: This product is for in vitro research use only