

MAS1 Rabbit Polyclonal Antibody

Catalog No: #55435

Package Size: #55435-1 50ul #55435-2 100ul

Orders: order@signalwayantibody.comSupport: tech@signalwayantibody.com

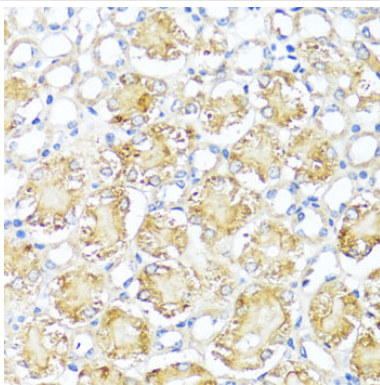
Description

Product Name	MAS1 Rabbit Polyclonal Antibody
Host Species	Rabbit
Clonality	Polyclonal
Isotype	IgG
Purification	Affinity purification
Applications	WB,IHC
Species Reactivity	Human,Mouse,Rat
Immunogen Description	Recombinant fusion protein of human MAS1 (NP_002368.1).
Other Names	MAS1;MAS;MGRA
Accession No.	Swiss Prot:P04201GenelD:4142
Uniprot	P04201
Calculated MW	37kDa
SDS-PAGE MW	41kDa
Formulation	Buffer: PBS with 0.02% sodium azide,50% glycerol,pH7.3.
Storage	Store at -20°C. Avoid freeze / thaw cycles.

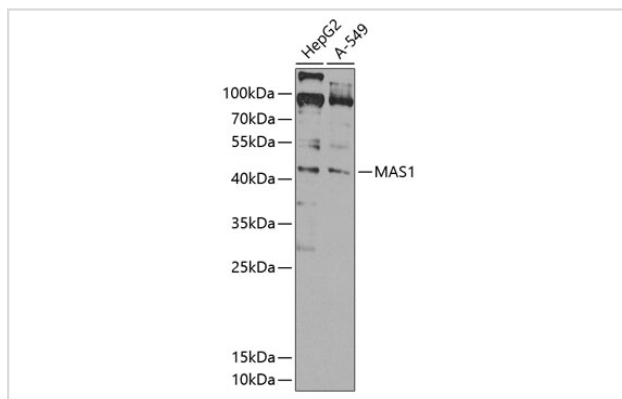
Application Details

WB□1:500 - 1:2000IHC□1:50 - 1:200

Images



Immunohistochemistry of paraffin-embedded mouse kidney using MAS1 at dilution of 1:100 (40x lens).



Western blot analysis of extracts of various cell lines, using MAS1 at 1:1000 dilution.

Background

This gene encodes a class I seven-transmembrane G-protein-coupled receptor. The encoded protein is a receptor for angiotensin-(1-7) and preferentially couples to the Gq protein, activating the phospholipase C signaling pathway. The encoded protein may play a role in multiple processes including hypotension, smooth muscle relaxation and cardioprotection by mediating the effects of angiotensin-(1-7).

Note: This product is for in vitro research use only