

DROSHA Rabbit Polyclonal Antibody

Catalog No: #55483



Package Size: #55483-1 50ul #55483-2 100ul

Orders: order@signalwayantibody.com
Support: tech@signalwayantibody.com

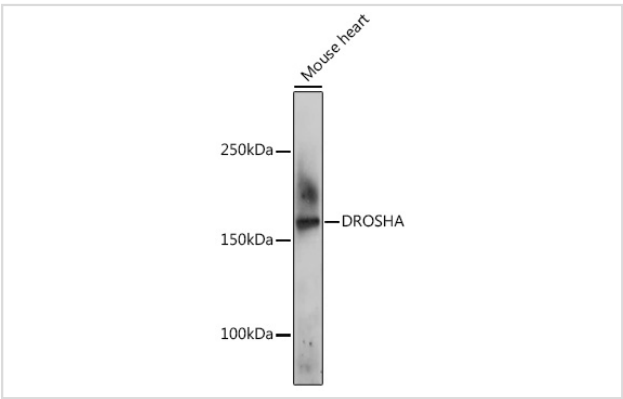
Description

Product Name	DROSHA Rabbit Polyclonal Antibody
Host Species	Rabbit
Clonality	Polyclonal
Isotype	IgG
Purification	Affinity purification
Applications	WB
Species Reactivity	Human,Mouse
Immunogen Description	A synthetic peptide of human DROSHA (NP_037367.3).
Other Names	DROSHA;ETOHI2;HSA242976;RANSE3L;RN3;RNASE3L;RNASEN
Accession No.	Uniprot:Q9NRR4GeneID:29102
Uniprot	Q9NRR4
GeneID	29102
Calculated MW	138kDa/151kDa/155kDa/159kDa
SDS-PAGE MW	159KDa
Formulation	PBS with 0.02% sodium azide,50% glycerol,pH7.3.
Storage	Store at -20°C. Avoid freeze / thaw cycles.

Application Details

WB 1:500 - 1:2000

Images



Western blot analysis of extracts of Mouse heart, using DROSHA Rabbit pAb.

Background

This gene encodes a ribonuclease (RNase) III double-stranded RNA-specific ribonuclease and subunit of the microprocessor protein complex, which catalyzes the initial processing step of microRNA (miRNA) synthesis. The encoded protein cleaves the stem loop structure from the primary microRNA (pri-miRNA) in the nucleus, yielding the precursor miRNA (pre-miRNA), which is then exported to the cytoplasm for further processing. In a human cell

line lacking a functional copy of this gene, canonical miRNA synthesis is reduced. Somatic mutations in this gene have been observed in human patients with kidney cancer.

Note: This product is for in vitro research use only