

XPC Rabbit Polyclonal Antibody

Catalog No: #55488



Package Size: #55488-1 50ul #55488-2 100ul

Orders: order@signalwayantibody.com
Support: tech@signalwayantibody.com

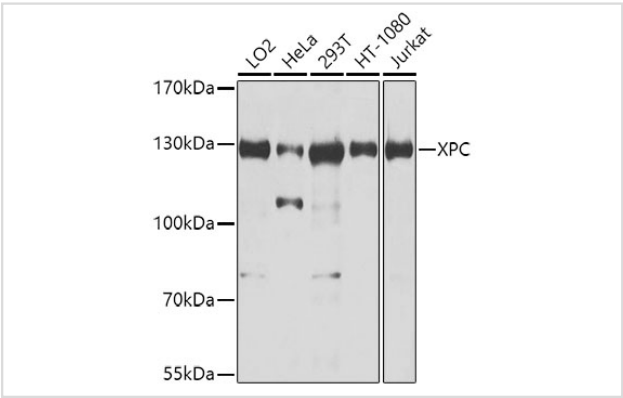
Description

Product Name	XPC Rabbit Polyclonal Antibody
Host Species	Rabbit
Clonality	Polyclonal
Isotype	IgG
Purification	Affinity purification
Applications	WB,IHC
Species Reactivity	Human
Immunogen Description	Recombinant fusion protein of human XPC (NP_004619.3).
Other Names	XPC;RAD4;XP3;XPCC;p125
Accession No.	Swiss Prot:Q01831GeneID:7508
Uniprot	Q01831
Calculated MW	15kDa/101kDa/105kDa
SDS-PAGE MW	130kDa
Formulation	Buffer: PBS with 0.02% sodium azide,50% glycerol,pH7.3.
Storage	Store at -20°C. Avoid freeze / thaw cycles.

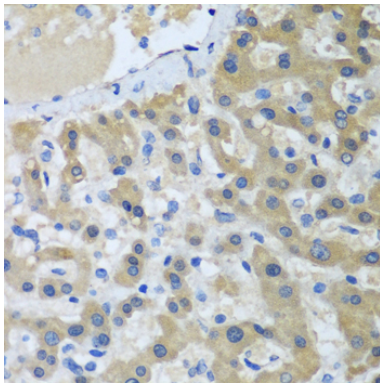
Application Details

WB 1:500 - 1:2000IHC 1:50 - 1:100IP 1:50 - 1:100

Images



Western blot analysis of extracts of various cell lines, using XPC at 1:1000 dilution.



Immunohistochemistry of paraffin-embedded human liver cancer using XPC at dilution of 1:100 (40x lens).

Background

This gene encodes a component of the nucleotide excision repair (NER) pathway. There are multiple components involved in the NER pathway, including Xeroderma pigmentosum (XP) A-G and V, Cockayne syndrome (CS) A and B, and trichothiodystrophy (TTD) group A, etc. This component, XPC, plays an important role in the early steps of global genome NER, especially in damage recognition, open complex formation, and repair protein complex formation. Mutations in this gene or some other NER components result in Xeroderma pigmentosum, a rare autosomal recessive disorder characterized by increased sensitivity to sunlight with the development of carcinomas at an early age. Alternatively spliced transcript variants have been found for this gene.

Note: This product is for in vitro research use only