

# DDX39B Rabbit Polyclonal Antibody

Catalog No: #55489



Package Size: #55489-1 50ul #55489-2 100ul

Orders: [order@signalwayantibody.com](mailto:order@signalwayantibody.com)  
Support: [tech@signalwayantibody.com](mailto:tech@signalwayantibody.com)

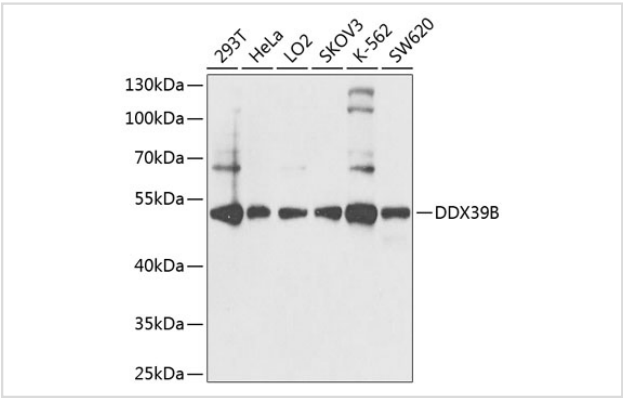
## Description

Product Name	DDX39B Rabbit Polyclonal Antibody
Host Species	Rabbit
Clonality	Polyclonal
Isotype	IgG
Purification	Affinity purification
Applications	WB,IHC,IF
Species Reactivity	Human,Mouse,Rat
Immunogen Description	Recombinant fusion protein of human DDX39B (NP_004631.1).
Other Names	DDX39B;BAT1;D6S81E;UAP56
Accession No.	Swiss Prot:Q13838GeneID:7919
Uniprot	Q13838
Calculated MW	48kDa/50kDa
SDS-PAGE MW	49kDa
Formulation	Buffer: PBS with 0.02% sodium azide,50% glycerol,pH7.3.
Storage	Store at -20°C. Avoid freeze / thaw cycles.

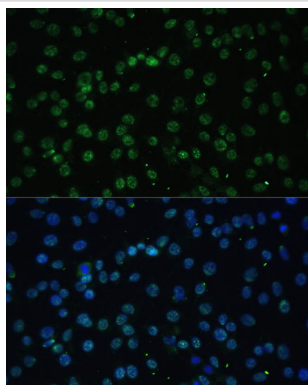
## Application Details

WB 1:500 - 1:2000IHC 1:100 - 1:200IF 1:50 - 1:200

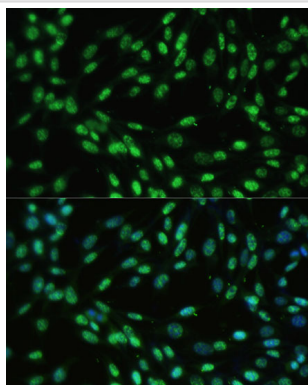
## Images



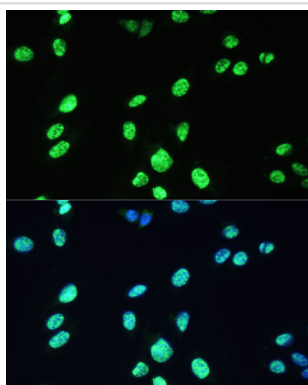
Western blot analysis of extracts of various cell lines, using DDX39B at 1:1000 dilution.



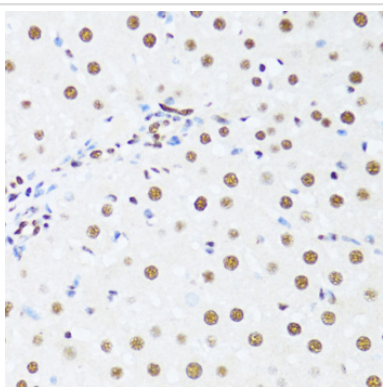
Immunofluorescence analysis of C6 cells using DDX39B Polyclonal at dilution of 1:100 (40x lens). Blue: DAPI for nuclear staining.



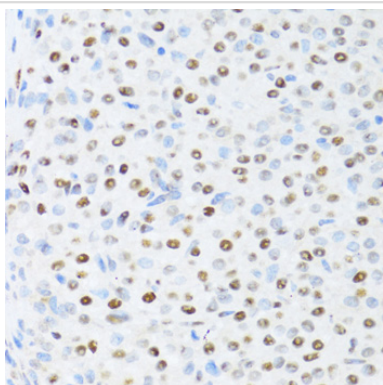
Immunofluorescence analysis of NIH-3T3 cells using DDX39B Polyclonal at dilution of 1:100 (40x lens). Blue: DAPI for nuclear staining.



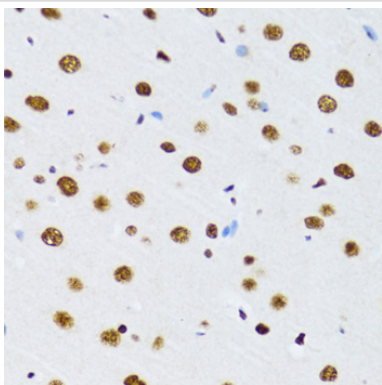
Immunofluorescence analysis of U-2 OS cells using DDX39B Polyclonal at dilution of 1:100 (40x lens). Blue: DAPI for nuclear staining.



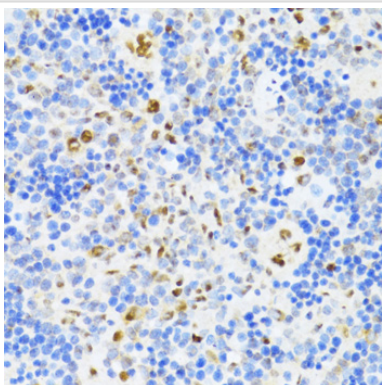
Immunohistochemistry of paraffin-embedded rat liver using DDX39B at dilution of 1:100 (40x lens).



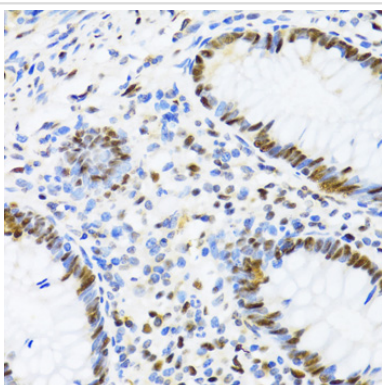
Immunohistochemistry of paraffin-embedded rat ovary using DDX39B at dilution of 1:100 (40x lens).



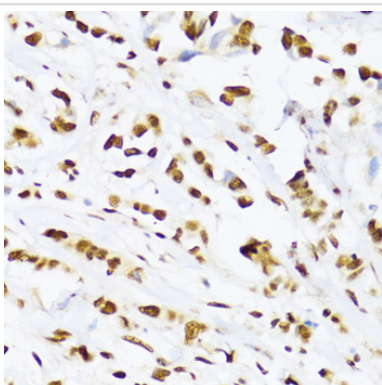
Immunohistochemistry of paraffin-embedded rat brain using DDX39B at dilution of 1:100 (40x lens).



Immunohistochemistry of paraffin-embedded rat spleen using DDX39B at dilution of 1:100 (40x lens).



Immunohistochemistry of paraffin-embedded human appendix using DDX39B at dilution of 1:100 (40x lens).



Immunohistochemistry of paraffin-embedded human breast cancer using DDX39B at dilution of 1:100 (40x lens).

## Background

This gene encodes a member of the DEAD box family of RNA-dependent ATPases that mediate ATP hydrolysis during pre-mRNA splicing. The encoded protein is an essential splicing factor required for association of U2 small nuclear ribonucleoprotein with pre-mRNA, and it also plays an important role in mRNA export from the nucleus to the cytoplasm. This gene belongs to a cluster of genes localized in the vicinity of the genes encoding tumor necrosis factor alpha and tumor necrosis factor beta. These genes are all within the human major histocompatibility complex class III region. Mutations in this gene may be associated with rheumatoid arthritis. Alternative splicing results in multiple transcript variants. Related pseudogenes have been identified on both chromosomes 6 and 11. Read-through transcription also occurs between this gene and the upstream ATP6V1G2 (ATPase, H<sup>+</sup> transporting, lysosomal 13kDa, V1 subunit G2) gene.

---

Note: This product is for in vitro research use only