

HRG Rabbit Polyclonal Antibody

Catalog No: #55512

Package Size: #55512-1 50ul #55512-2 100ul

Orders: order@signalwayantibody.comSupport: tech@signalwayantibody.com

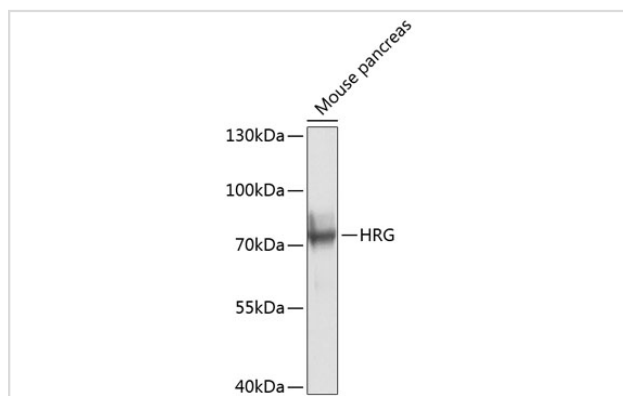
Description

Product Name	HRG Rabbit Polyclonal Antibody
Host Species	Rabbit
Clonality	Polyclonal
Isotype	IgG
Purification	Affinity purification
Applications	WB
Species Reactivity	Mouse,Rat
Immunogen Description	Recombinant fusion protein of human HRG (NP_000403.1).
Other Names	HRG;HPRG;HRGP;THPH11
Accession No.	Uniprot:P04196GenelD:3273
Uniprot	P04196
GenelD	3273
Calculated MW	59kDa
SDS-PAGE MW	80kDa
Formulation	PBS with 0.02% sodium azide,50% glycerol,pH7.3.
Storage	Store at -20°C. Avoid freeze / thaw cycles.

Application Details

WB 1:500 - 1:2000

Images



Western blot analysis of extracts of mouse pancreas, using HRG antibody.

Background

This histidine-rich glycoprotein contains two cystatin-like domains and is located in plasma and platelets. The physiological function has not been determined but it is known that the protein binds heme, dyes and divalent metal ions. The encoded protein also has a peptide that displays antimicrobial activity against *C. albicans*, *E. coli*, *S. aureus*, *P. aeruginosa*, and *E. faecalis*. It can inhibit rosette formation and interacts with heparin,

thrombospondin and plasminogen. Two of the protein's effects, the inhibition of fibrinolysis and the reduction of inhibition of coagulation, indicate a potential prothrombotic effect. Mutations in this gene lead to thrombophilia due to abnormal histidine-rich glycoprotein levels.

Note: This product is for in vitro research use only