

ITGB8 Rabbit Polyclonal Antibody

Catalog No: #55513



Package Size: #55513-1 50ul #55513-2 100ul

Orders: order@signalwayantibody.com
Support: tech@signalwayantibody.com

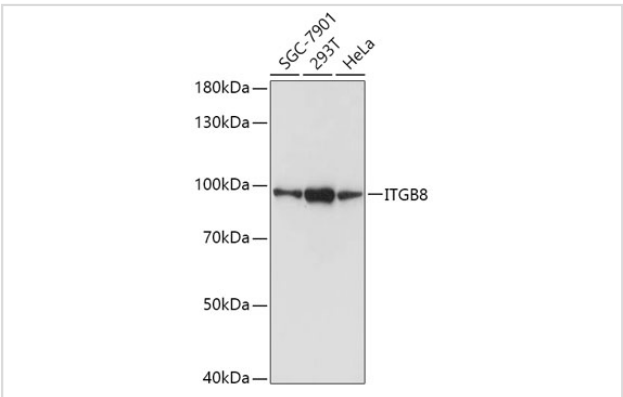
Description

Product Name	ITGB8 Rabbit Polyclonal Antibody
Host Species	Rabbit
Clonality	Polyclonal
Isotype	IgG
Purification	Affinity purification
Applications	WB
Species Reactivity	Human,Mouse,Rat
Immunogen Description	Recombinant fusion protein of human ITGB8 (NP_002205.1).
Other Names	ITGB8
Accession No.	Uniprot:P26012GenelD:3696
Uniprot	P26012
GenelD	3696
Calculated MW	71kDa/85kDa
SDS-PAGE MW	100kDa
Formulation	PBS with 0.02% sodium azide,50% glycerol,pH7.3.
Storage	Store at -20°C. Avoid freeze / thaw cycles.

Application Details

WB 1:500 - 1:2000

Images



Western blot analysis of extracts of various cell lines, using ITGB8 antibody.

Background

This gene is a member of the integrin beta chain family and encodes a single-pass type I membrane protein with a VWFA domain and four cysteine-rich repeats. This protein noncovalently binds to an alpha subunit to form a heterodimeric integrin complex. In general, integrin complexes mediate cell-cell and cell-extracellular matrix interactions and this complex plays a role in human airway epithelial proliferation. Alternatively spliced

variants which encode different protein isoforms have been described; however, not all variants have been fully characterized.

Note: This product is for in vitro research use only