

SST Rabbit Polyclonal Antibody

Catalog No: #55592



Package Size: #55592-1 50ul #55592-2 100ul

Orders: order@signalwayantibody.com
Support: tech@signalwayantibody.com

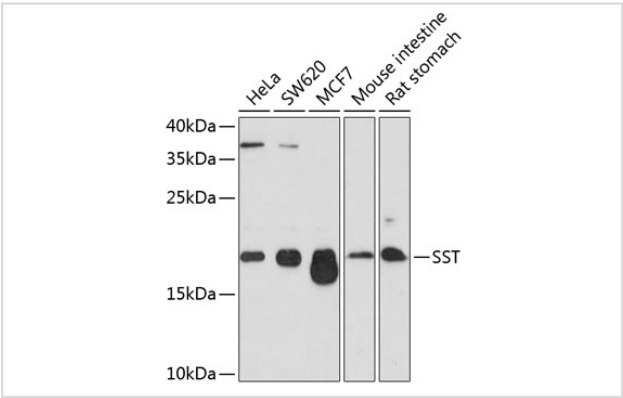
Description

Product Name	SST Rabbit Polyclonal Antibody
Host Species	Rabbit
Clonality	Polyclonal
Isotype	IgG
Purification	Affinity purification
Applications	WB,IHC,IF
Species Reactivity	Human,Mouse,Rat
Immunogen Description	A synthetic peptide of human SST (NP_001039.1).
Other Names	SST;SMST
Accession No.	Swiss Prot:P61278GenelD:6750
Uniprot	P61278
Calculated MW	12kDa
SDS-PAGE MW	17kDa
Formulation	Buffer: PBS with 0.02% sodium azide,50% glycerol,pH7.3.
Storage	Store at -20°C. Avoid freeze / thaw cycles.

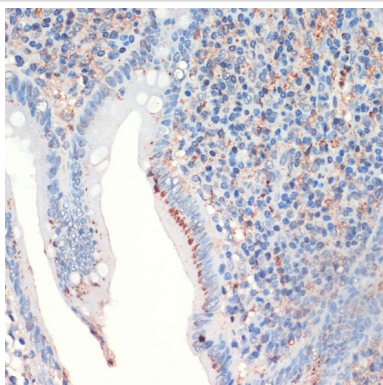
Application Details

WB 1:200 - 1:2000IHC 1:50 - 1:200IF 1:50 - 1:200

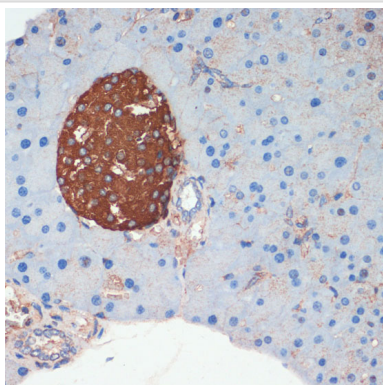
Images



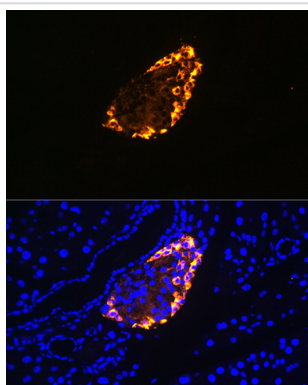
Western blot analysis of extracts of various cell lines, using SST at 1:1000 dilution.



Immunohistochemistry of paraffin-embedded human appendix using SST at dilution of 1:200 (40x lens).



Immunohistochemistry of paraffin-embedded mouse pancreas using SST at dilution of 1:200 (40x lens).



Immunofluorescence analysis of rat pancreas using SST Rabbit pAb at dilution of 1:100 (40x lens). Blue: DAPI for nuclear staining.

Background

The hormone somatostatin has active 14 aa and 28 aa forms that are produced by alternate cleavage of the single preproprotein encoded by this gene. Somatostatin is expressed throughout the body and inhibits the release of numerous secondary hormones by binding to high-affinity G-protein-coupled somatostatin receptors. This hormone is an important regulator of the endocrine system through its interactions with pituitary growth hormone, thyroid stimulating hormone, and most hormones of the gastrointestinal tract. Somatostatin also affects rates of neurotransmission in the central nervous system and proliferation of both normal and tumorigenic cells.

Note: This product is for in vitro research use only