

IMPDH1 Rabbit Polyclonal Antibody

Catalog No: #55601



Package Size: #55601-1 50ul #55601-2 100ul

Orders: order@signalwayantibody.com
Support: tech@signalwayantibody.com

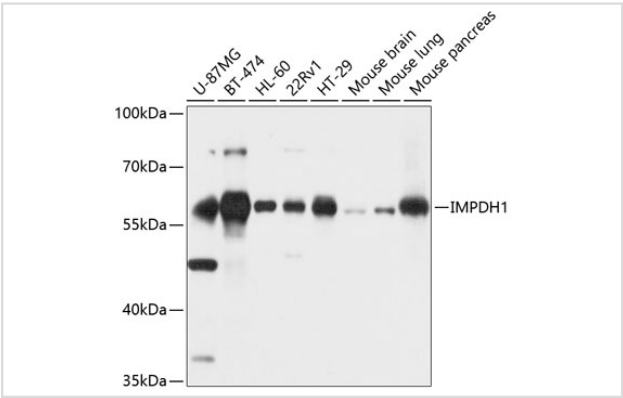
Description

Product Name	IMPDH1 Rabbit Polyclonal Antibody
Host Species	Rabbit
Clonality	Polyclonal
Isotype	IgG
Purification	Affinity purification
Applications	WB,IF
Species Reactivity	Human,Mouse,Rat
Immunogen Description	Recombinant fusion protein of human IMPDH1 (NP_899066.1).
Other Names	IMPDH1;IMPD;IMPD1;IMPDH-I;LCA11;RP10;sWSS2608
Accession No.	Swiss Prot:P20839GenelD:3614
Uniprot	P20839
Calculated MW	52kDa/54kDa/55kDa/60kDa/63kDa/64kDa
SDS-PAGE MW	55kDa
Formulation	Buffer: PBS with 0.02% sodium azide,50% glycerol,pH7.3.
Storage	Store at -20°C. Avoid freeze / thaw cycles.

Application Details

WB 1:500 - 1:2000IF 1:50 - 1:200

Images



Western blot analysis of extracts of various cell lines, using IMPDH1 at 1:1000 dilution.

Background

The protein encoded by this gene acts as a homotetramer to regulate cell growth. The encoded protein is an enzyme that catalyzes the synthesis of xanthine monophosphate (XMP) from inosine-5'-monophosphate (IMP). This is the rate-limiting step in the de novo synthesis of guanine nucleotides. Defects in this gene are a cause of retinitis pigmentosa type 10 (RP10). Several transcript variants encoding different isoforms have been found for this gene.

Note: This product is for in vitro research use only