

# CHRNA2 Rabbit Polyclonal Antibody

Catalog No: #55612



Package Size: #55612-1 50ul #55612-2 100ul

Orders: [order@signalwayantibody.com](mailto:order@signalwayantibody.com)  
Support: [tech@signalwayantibody.com](mailto:tech@signalwayantibody.com)

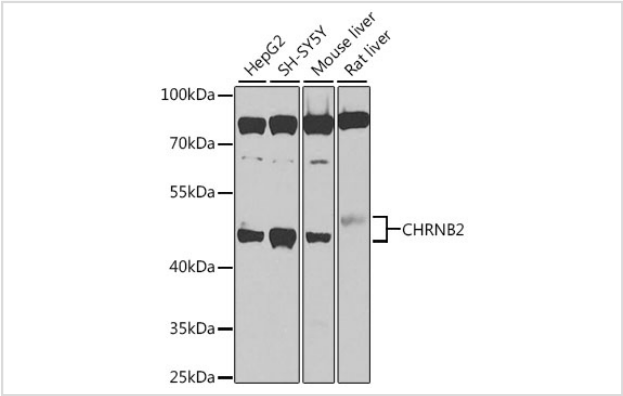
## Description

Product Name	CHRNA2 Rabbit Polyclonal Antibody
Host Species	Rabbit
Clonality	Polyclonal
Isotype	IgG
Purification	Affinity purification
Applications	WB
Species Reactivity	Human,Mouse,Rat
Immunogen Description	Recombinant fusion protein of human CHRNA2 (NP_000739.1).
Other Names	CHRNA2;EFNL3;nAChRB2
Accession No.	Uniprot:P17787GenelD:1141
Uniprot	P17787
GenelD	1141
Calculated MW	57kDa
SDS-PAGE MW	50-52kDa
Formulation	PBS with 0.02% sodium azide,50% glycerol,pH7.3.
Storage	Store at -20°C. Avoid freeze / thaw cycles.

## Application Details

WB 1:500 - 1:2000

## Images



Western blot analysis of extracts of various cell lines, using CHRNA2 antibody.

## Background

Neuronal acetylcholine receptors are homo- or heteropentameric complexes composed of homologous alpha and beta subunits. They belong to a superfamily of ligand-gated ion channels which allow the flow of sodium and potassium across the plasma membrane in response to ligands such as acetylcholine and nicotine. This gene encodes one of several beta subunits. Mutations in this gene are associated with autosomal dominant nocturnal

frontal lobe epilepsy.

---

Note: This product is for in vitro research use only