

DSG1 Rabbit Polyclonal Antibody

Catalog No: #55613



Package Size: #55613-1 50ul #55613-2 100ul

Orders: order@signalwayantibody.com
Support: tech@signalwayantibody.com

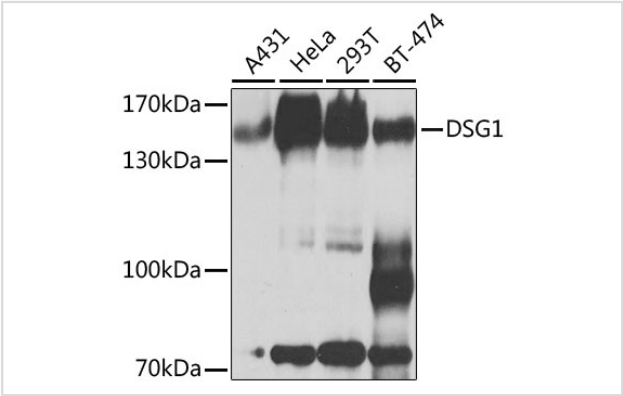
Description

| | |
|-----------------------|---|
| Product Name | DSG1 Rabbit Polyclonal Antibody |
| Host Species | Rabbit |
| Clonality | Polyclonal |
| Isotype | IgG |
| Purification | Affinity purification |
| Applications | WB,IF |
| Species Reactivity | Human,Rat |
| Immunogen Description | Recombinant fusion protein of human DSG1 (NP_001933.2). |
| Other Names | DSG1;CDHF4;DG1;DSG;EPKHE;EPKHIA;PPKS1;SPPK1 |
| Accession No. | Uniprot:Q02413GeneID:1828 |
| Uniprot | Q02413 |
| GeneID | 1828 |
| Calculated MW | 42kDa/113kDa |
| SDS-PAGE MW | 150kDa |
| Formulation | PBS with 0.02% sodium azide,50% glycerol,pH7.3. |
| Storage | Store at -20°C. Avoid freeze / thaw cycles. |

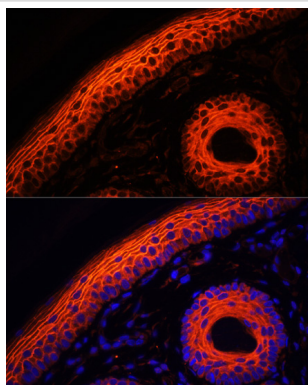
Application Details

WB 1:500 - 1:2000IF 1:50 - 1:100

Images



Western blot analysis of extracts of various cell lines, using DSG1 antibody.



Immunofluorescence analysis of rat skin using DSG1 antibody.

Background

This gene encodes a member of the desmoglein protein subfamily. Desmogleins, along with desmocollins, are cadherin-like transmembrane glycoproteins that are major components of the desmosome. Desmosomes are cell-cell junctions that help resist shearing forces and are found in high concentrations in cells subject to mechanical stress. This gene is found in a cluster with other desmoglein family members on chromosome 18. The encoded protein has been identified as a target of auto-antibodies in the autoimmune skin blistering disease pemphigus foliaceus. Disruption of this gene has also been associated with the skin diseases palmoplantar keratoderma and erythroderma.

Note: This product is for in vitro research use only