

SOCS6 Rabbit Polyclonal Antibody

Catalog No: #55640



Package Size: #55640-1 50ul #55640-2 100ul

Orders: order@signalwayantibody.com
Support: tech@signalwayantibody.com

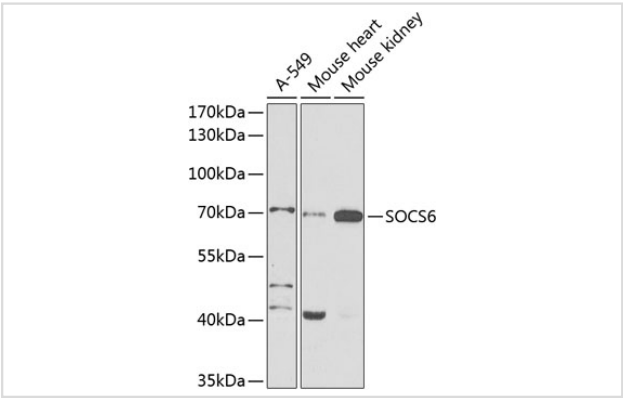
Description

Product Name	SOCS6 Rabbit Polyclonal Antibody
Host Species	Rabbit
Clonality	Polyclonal
Isotype	IgG
Purification	Affinity purification
Applications	WB,IHC
Species Reactivity	Human,Mouse
Immunogen Description	Recombinant fusion protein of human SOCS6 (NP_004223.2).
Other Names	SOCS6;CIS-4;CIS4;HSPC060;SOCS-4;SOCS-6;SOCS4;SSI4;STAI4;STATI4
Accession No.	Swiss Prot:O14544GeneID:9306
Uniprot	O14544
Calculated MW	59kDa
SDS-PAGE MW	70kDa
Formulation	Buffer: PBS with 0.02% sodium azide,50% glycerol,pH7.3.
Storage	Store at -20°C. Avoid freeze / thaw cycles.

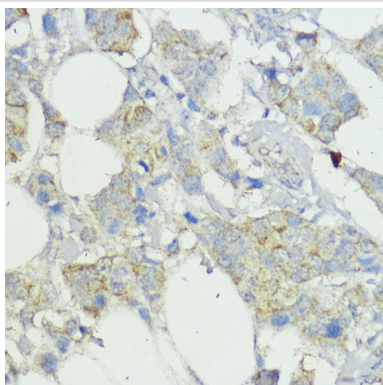
Application Details

WB 1:500 - 1:2000IHC 1:50 - 1:200

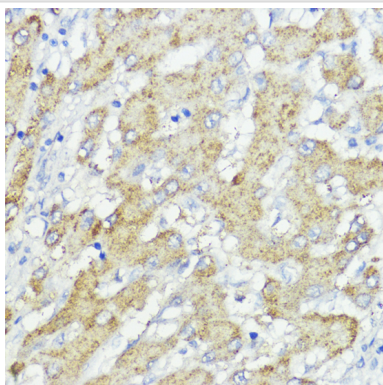
Images



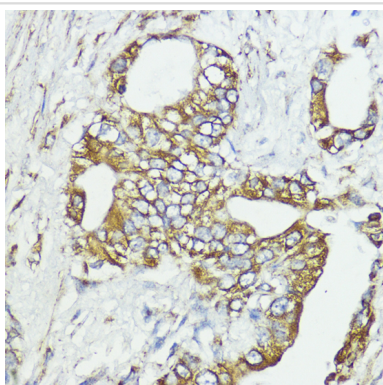
Western blot analysis of extracts of various cell lines, using SOCS6 at 1:1000 dilution.



Immunohistochemistry of paraffin-embedded human mammary cancer using SOCS6 at dilution of 1:100 (40x lens).



Immunohistochemistry of paraffin-embedded human liver cancer using SOCS6 at dilution of 1:100 (40x lens).



Immunohistochemistry of paraffin-embedded human lung cancer using SOCS6 at dilution of 1:100 (40x lens).

Background

The protein encoded by this gene contains a SH2 domain and a CIS homolog domain. The protein thus belongs to the cytokine-induced STAT inhibitor (CIS), also known as suppressor of cytokine signaling (SOCS) or STAT-induced STAT inhibitor (SSI), protein family. CIS family members are known to be cytokine-inducible negative regulators of cytokine signaling. The expression of this gene can be induced by GM-CSF and EPO in hematopoietic cells. A high expression level of this gene was found in factor-independent chronic myelogenous leukemia (CML) and erythroleukemia (HEL) cell lines.

Note: This product is for in vitro research use only