

UBC13 Antibody

Catalog No: #24258

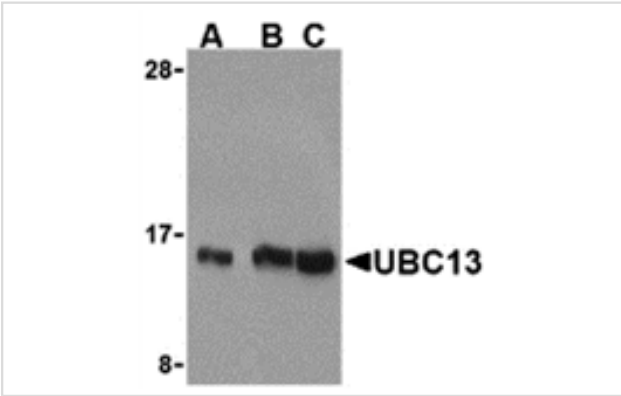


Orders: order@signalwayantibody.com
Support: tech@signalwayantibody.com

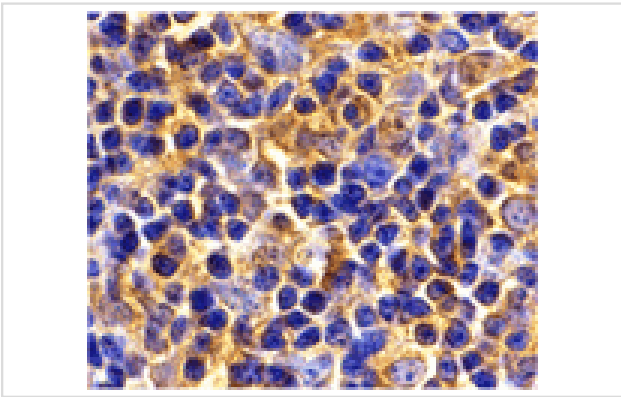
Description

Product Name	UBC13 Antibody
Host Species	Rabbit
Clonality	Polyclonal
Purification	UBC13 Antibody is affinity chromatography purified via peptide column.
Applications	ELISA WB IHC
Species Reactivity	Hu Ms Rt
Immunogen Type	Peptide
Immunogen Description	Raised against a peptide corresponding to 15 amino acids near the C-terminus of human UBC13.
Target Name	UBC13
Accession No.	Swiss-Prot:P61088Gene ID:7334
Uniprot	P61088
GeneID	7334;
Concentration	1mg/ml
Formulation	Supplied in PBS containing 0.02% sodium azide.
Storage	Can be stored at -20°C, stable for one year. As with all antibodies care should be taken to avoid repeated freeze thaw cycles. Antibodies should not be exposed to prolonged high temperatures.

Images



Western blot analysis of UBC13 in human small intestine cell lysates with UBC13 antibody at (A) 0.5, (B) 1, and (C) 2 ug/mL.



Immunohistochemistry of UBC13 in mouse thymus tissue with UBC13 antibody at 2 ug/mL.

Background

Ubiquitin-conjugating enzyme 13 (Ubc13) was initially discovered in *S. cerevisiae* as a DNA-damage inducible protein involved in the error-free DNA postreplication repair pathway. It has recently been shown to be an important component of the Toll-like receptor and IL-1R signaling pathway. Signals from these pathways are relayed by a number of downstream molecules such as MyD88 and tumor necrosis factor receptor associated factor (TRAF6), ultimately activating various kinases and transcription factors. Ubc13 is part of a dimeric ubiquitin-conjugating enzyme complex also containing UEV1A (ubiquitin-conjugating enzyme E2 variant 1) that together with TRAF6 activates TAK1, a member of the mitogen-activated protein kinase kinase kinase family. The Ubc13-UEV1A complex also mediates the Lys-63 ubiquitination of TRAF-6, and this ubiquitination is essential for TAK1 activation.

Note: This product is for in vitro research use only