

Anti-CD38 antibody(DM28), Rabbit mAb

Catalog No: #29636



Package Size: #29636-1 10ug #29636-2 100ug

Orders: order@signalwayantibody.com
Support: tech@signalwayantibody.com

Description

Product Name	Anti-CD38 antibody(DM28), Rabbit mAb
Host Species	Rabbit
Clone No.	DM28
Isotype	Rabbit IgG
Purification	Purified from cell culture supernatant by affinity chromatography
Applications	ELISA,Flow Cyt
Species Reactivity	Human
Immunogen Description	Recombinant human CD38 (Val43-Ile300)(PME100004) produced by using human HEK293 cells
Other Names	T10, cADPr hydrolase 1
Calculated MW	34kDa
Formulation	Preservative: 0.1% Procline 300 Constituents: 50% Glycerol; PBS,pH 7.4; 0.1% BSA
Storage	Store at -20°C for 12 months (Avoid repeated freezing and thawing)

Application Details

Flow Cyt 1/100; MMTumor cell killing

Images

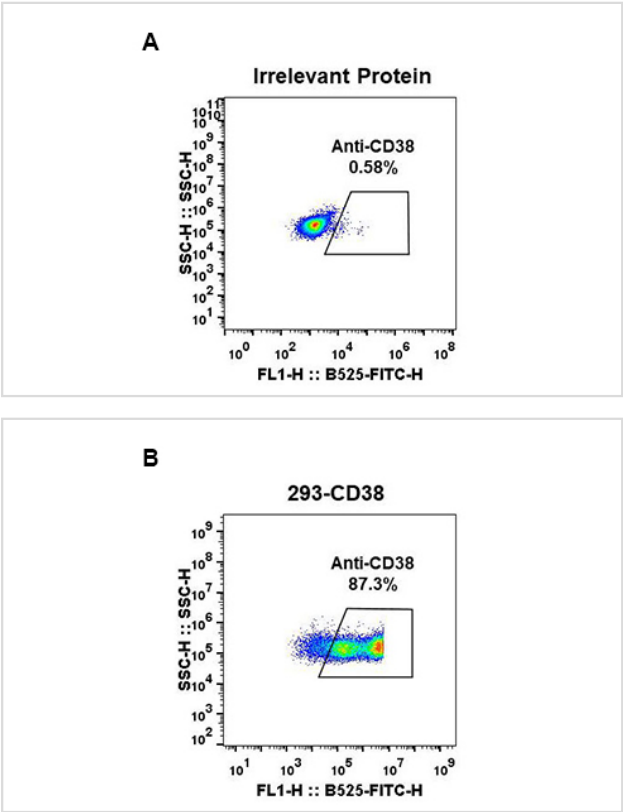


Figure 1. Expi 293 cell line transfected with irrelevant protein (left) and human CD38(right) were surface stained with Rabbit anti-CD38 monoclonal antibody 1µg/ml (clone: DM28) followed by Alexa 488-conjugated anti-rabbit IgG secondary antibody.

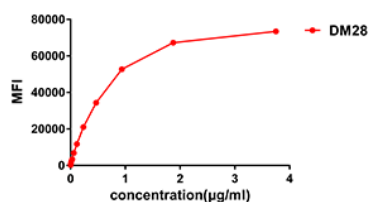


Figure 2. Flow cytometry data of serially titrated Rabbit anti-CD38 monoclonal antibody (clone: DM28) on Raji cells. The Y-axis represents the mean fluorescence intensity (MFI) while the X-axis represents the concentration of IgG used.

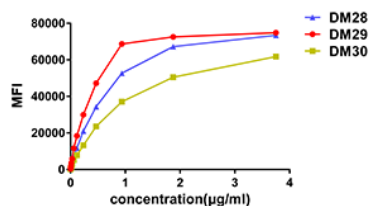


Figure 3. Affinity ranking of different Rabbit anti-CD38 mAb clones by titration of different concentration onto Raji cells. The Y-axis represents the mean fluorescence intensity (MFI) while the X-axis represents the concentration of IgG used.

Product Description

Format: Liquid

Background

CD antigen CD38 is also known as ADP-ribosyl cyclase 1, which belongs to the ADP-ribosyl cyclase family. CD38 is expressed at high levels in pancreas, liver, kidney, brain, testis, ovary, placenta, malignant lymphoma and neuroblastoma. CD38 is a multifunctional ectoenzyme that catalyzes the synthesis and hydrolysis of cyclic ADP-ribose (cADPR) from NAD⁺ to ADP-ribose. These reaction products are essential for the regulation of intracellular Ca²⁺. The loss of CD38 function is associated with impaired immune responses, metabolic disturbances, and behavioral modifications. The CD38 protein is a marker of cell activation. It has been connected to HIV infection, leukemias, myelomas, solid tumors, type II diabetes mellitus and bone metabolism. CD38 has been used as a prognostic marker in leukemia.

Note: This product is for in vitro research use only