

Human CD48 Protein, mFc-His Tag

Catalog No: #AP89543



Package Size: #AP89543-1 10ug #AP89543-2 100ug

Orders: order@signalwayantibody.com
Support: tech@signalwayantibody.com

Description

Product Name	Human CD48 Protein, mFc-His Tag
Host Species	HEK293
Purification	The purity of the protein is greater than 95% as determined by SDS-PAGE and Coomassie blue staining.
Species Reactivity	Human
Immunogen Description	CD48(Gln27-Ser220)+mFc(Pro99-Lys330)+6xHis
Other Names	CD48, BCM1, SLAMF2, BLAST, BLAST1, MEM-102, TCT.1, BCM-1, SLAMF-2, BLAST-1
Calculated MW	69-72 kDa
Tag Info	C-Mouse Fc and 6xHis tag
Formulation	Lyophilized from sterile PBS, pH 7.4. Normally 5 % - 23 % trehalose is added as protectants before lyophilization.
Storage	Store at -80°C for 12 months (Avoid repeated freezing and thawing)

Images

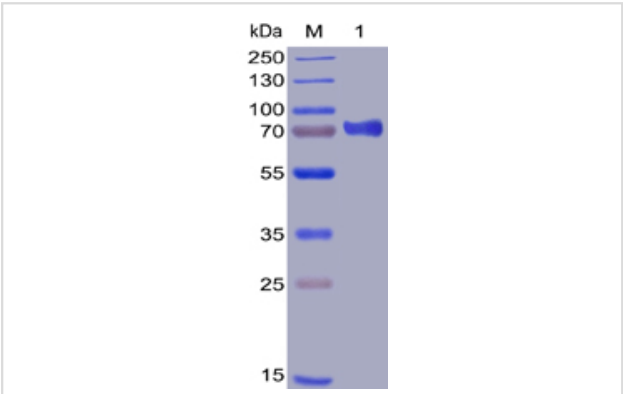
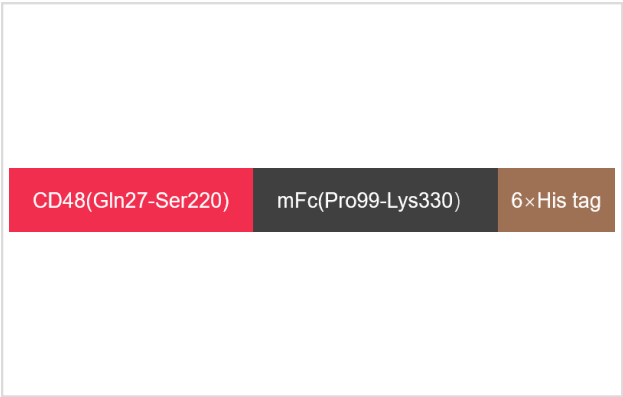


Figure 1. Human CD48 Protein, mFc-His Tag on SDS-PAGE under reducing condition.



Product Description

Expression Region:600Research Topic:This gene encodes a member of the CD2 subfamily of immunoglobulin-like receptors which includes SLAM (signaling lymphocyte activation molecules) proteins. The encoded protein is found on the surface of lymphocytes and other immune cells, dendritic

cells and endothelial cells, and participates in activation and differentiation pathways in these cells. The encoded protein does not have a transmembrane domain, however, but is held at the cell surface by a GPI anchor via a C-terminal domain which maybe cleaved to yield a soluble form of the receptor. Multiple transcript variants encoding different isoforms have been found for this gene.

Note: This product is for in vitro research use only