

# Anti-TAU Antibody

Catalog No: #21724



Package Size: #21724-1 50ul #21724-2 100ul

Orders: [order@signalwayantibody.com](mailto:order@signalwayantibody.com)  
Support: [tech@signalwayantibody.com](mailto:tech@signalwayantibody.com)

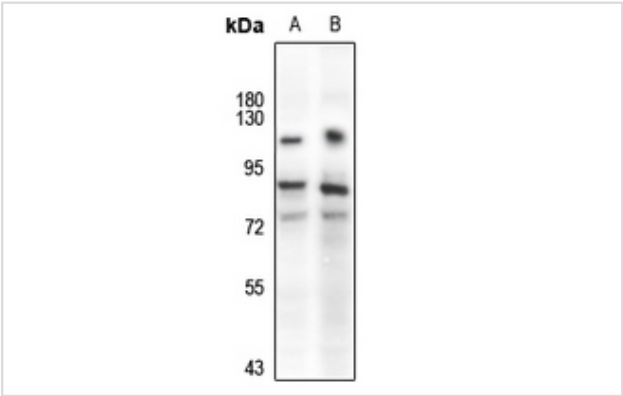
## Description

Product Name	Anti-TAU Antibody
Host Species	Rabbit
Clonality	Polyclonal
Purification	The antibody was purified by immunogen affinity chromatography.
Applications	WB IHC
Species Reactivity	Human,Mouse,Rat
Specificity	Recognizes endogenous levels of TAU protein.
Immunogen Description	KLH-conjugated synthetic peptide encompassing a sequence within the center region of human TAU.
Other Names	MAPTL; MTBT1; TAU; Microtubule-associated protein tau; Neurofibrillary tangle protein; Paired helical filament-tau; PHF-tau
Accession No.	Swiss-Prot:P10636
Uniprot	P10636
GeneID	4137
Calculated MW	50-80kd
Formulation	Liquid in 0.42% Potassium phosphate, 0.87% Sodium chloride, pH 7.3, 30% glycerol, and 0.01% sodium azide.
Storage	Store at -20°C/1 year

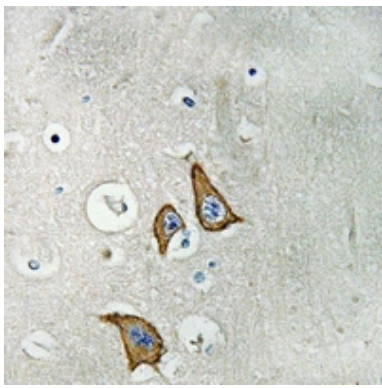
## Application Details

WB dilution: 1:500-1:1000  
IHC dilution: 1:50-1:200

## Images



Western blot analysis of TAU expression in mouse brain (A), rat brain (B) whole cell lysates.



Immunohistochemical analysis of TAU staining in human brain formalin fixed paraffin embedded tissue section. The section was pre-treated using heat mediated antigen retrieval with sodium citrate buffer (pH 6.0). The section was then incubated with the antibody at room temperature and detected using an HRP conjugated compact polymer system. DAB was used as the chromogen. The section was then counterstained with haematoxylin and mounted with DPX.

---

Note: This product is for in vitro research use only