

IL-32 Antibody

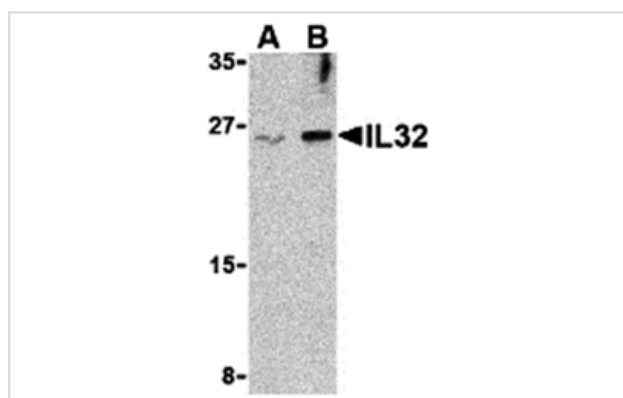
Catalog No: #24393

Orders: order@signalwayantibody.comSupport: tech@signalwayantibody.com

Description

Product Name	IL-32 Antibody
Host Species	Rabbit
Clonality	Polyclonal
Purification	Affinity chromatography purified via peptide column
Applications	ELISA WB
Species Reactivity	Hu Ms
Specificity	This antibody detects the largest isoform of IL-32.
Immunogen Type	Peptide
Immunogen Description	Raised against a 16 amino acid peptide from near the center of human IL-32.
Target Name	IL-32
Other Names	Interleukin 32
Accession No.	Swiss-Prot:P24001 Gene ID:9235
Uniprot	P24001
GeneID	9235;
Concentration	1mg/ml
Formulation	Supplied in PBS containing 0.02% sodium azide.
Storage	Can be stored at -20°C, stable for one year. As with all antibodies care should be taken to avoid repeated freeze thaw cycles. Antibodies should not be exposed to prolonged high temperatures.

Images



Western blot analysis of IL-32 in Jurkat cell lysate with IL-32 antibody at (A) 2.5 and (B) 5 ug/mL.

Background

Interleukin-32 (IL-32) was initially identified as a transcript (NK4) that is selectively expressed in lymphocytes and NK cells and whose expression is increased following activation by IL-2. It was later re-isolated from an IL-18-treated lung carcinoma cell line and re-named IL-32. IL-32 is unusual in that it does not share sequence homology with known cytokine families and is highly expressed in immune tissues, existing in at least four differentially spliced isoforms. Because treatment of human monocytic and mouse macrophage cells with IL-32 induces several proinflammatory cytokines such as TNF- α , IL-8 and MIP-2, and because it is also induced in human peripheral lymphocyte cells after mitogen stimulation and in epithelial cells by IFN γ , it has been suggested that IL-32 may play a role in autoimmune and inflammatory diseases such as rheumatoid arthritis.

Note: This product is for in vitro research use only