

LKB1 Antibody

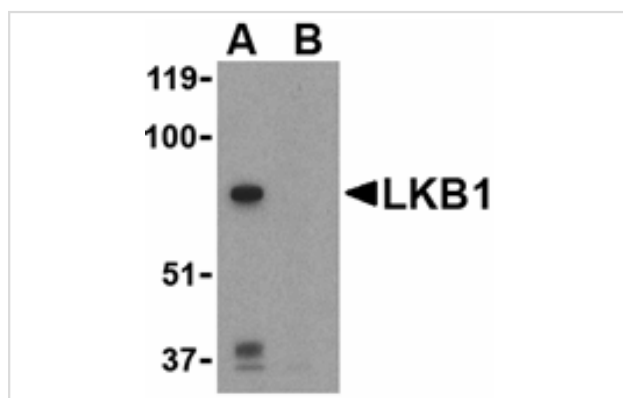
Catalog No: #24473

Orders: order@signalwayantibody.comSupport: tech@signalwayantibody.com

Description

Product Name	LKB1 Antibody
Host Species	Rabbit
Clonality	Polyclonal
Purification	Affinity chromatography purified via peptide column
Applications	ELISA WB
Species Reactivity	Hu Ms
Immunogen Type	Peptide
Immunogen Description	Raised against a 15 amino acid peptide from near the carboxy terminus of human LKB1.
Target Name	LKB1
Other Names	Serine-threonine protein kinase 11, STK11, NT-REN-19 antigen
Accession No.	Swiss-Prot:Q15831 Gene ID:6794
Uniprot	Q15831
GeneID	6794;
Concentration	1mg/ml
Formulation	Supplied in PBS containing 0.02% sodium azide.
Storage	Can be stored at -20°C, stable for one year. As with all antibodies care should be taken to avoid repeated freeze thaw cycles. Antibodies should not be exposed to prolonged high temperatures.

Images



Western blot analysis of LKB1 in PC-3 cell lysate with LKB1 antibody at 1 ug/mL in the (A) absence or (B) presence of blocking peptide.

Background

The LKB1 serine/threonine protein kinase was initially identified as a tumor suppressor gene mutated in human Peutz-Jeghers syndrome (PJS), a condition resulting in the growth of numerous intestinal polyps classed as hamartomas. LKB1 exists as a heterotrimeric complex with two other proteins, Ste20-related adaptor protein (STRAD) and MO25. Together, this complex can phosphorylate and activate the AMP-activate protein kinase (AMPK). Following AMPK activation by LKB1, AMPK then phosphorylates TSC1 and TSC2, key components of the metabolism-regulating TOR signaling pathway, which antagonizes the activation for the TOR pathway. LKB1 has also been shown to play a fundamental role in controlling the spatial orientation of structures required to maintain an ordered, polarized epithelium.

Note: This product is for in vitro research use only