

DISC1 Antibody

Catalog No: #24562

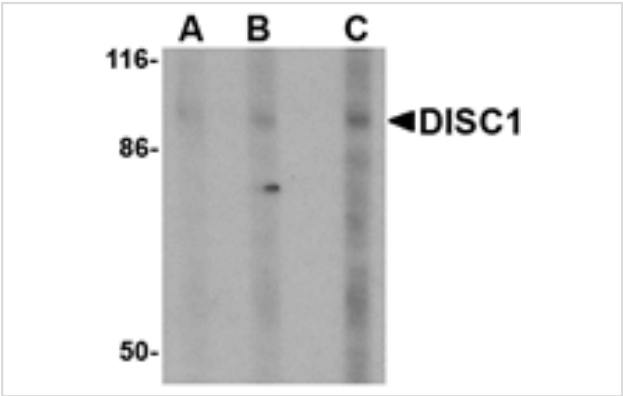


Orders: order@signalwayantibody.com
Support: tech@signalwayantibody.com

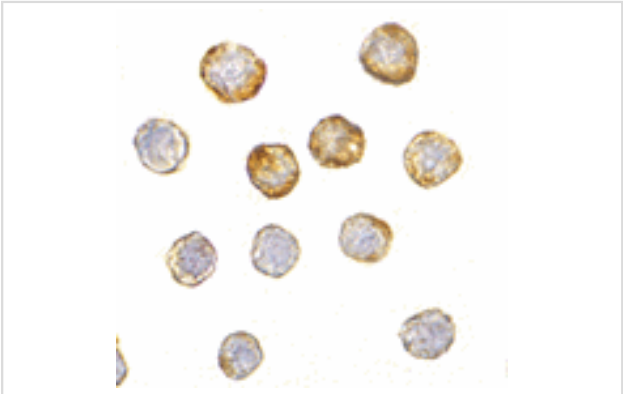
Description

Product Name	DISC1 Antibody
Host Species	Rabbit
Clonality	Polyclonal
Purification	Affinity chromatography purified via peptide column
Applications	ELISA WB ICC
Species Reactivity	Hu Ms
Immunogen Type	Peptide
Immunogen Description	Raised against a 18 amino acid peptide from near the center of human DISC1.
Target Name	DISC1
Other Names	Disrupted in schizophrenia 1
Accession No.	Swiss-Prot:Q9NRI5Gene ID:27185
Uniprot	Q9NRI5
GeneID	27185;
Concentration	1mg/ml
Formulation	Supplied in PBS containing 0.02% sodium azide.
Storage	Can be stored at -20°C, stable for one year. As with all antibodies care should be taken to avoid repeated freeze thaw cycles. Antibodies should not be exposed to prolonged high temperatures.

Images



Western blot analysis of DISC1 in SK-N-SH cell lysate with DISC1 antibody at (A) 0.5, (B) 1 and (C) 2 ug/mL.



Immunocytochemistry of DISC1 in HeLa cells with DISC1 antibody at 5 ug/mL.

Background

Disrupted in schizophrenia 1 (DISC1) is a candidate gene for susceptibility to schizophrenia. It was discovered through chromosomal analysis of a large Scottish family whose members exhibited schizophrenia and related psychiatric disorders. Through yeast two-hybrid screening, it was discovered that DISC1 interacts with many members of the centrosome and cytoskeletal system including MAP1A and Nudel. More recently, DISC1 has been found to regulate the transport of a complex containing Nudel, the lissencephaly-1 (LIS1) protein, and 14-3-3epsilon from neuronal cell bodies to the axons by the action of the microtubule-dependent directed motor protein kinesin-1, also known as KIF5A. Decreased expression of DISC1 in neurons caused an accelerated rate of neuronal integration, resulting in aberrant morphological development, suggesting that DISC1 plays a role in dendritic development and synapse formation. DISC1 has at least four known isoforms.

Note: This product is for in vitro research use only