

STEAP3 Antibody

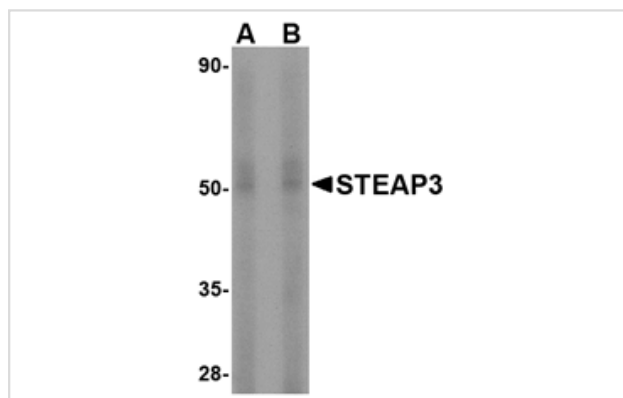
Catalog No: #24568

Orders: order@signalwayantibody.comSupport: tech@signalwayantibody.com

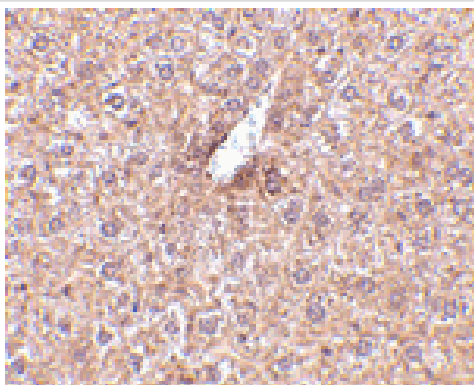
Description

Product Name	STEAP3 Antibody
Host Species	Rabbit
Clonality	Polyclonal
Purification	Affinity chromatography purified via peptide column
Applications	ELISA WB IHC
Species Reactivity	Hu Ms Rt
Specificity	This STEAP3 antibody does not cross-react with other STEAP proteins.
Immunogen Type	Peptide
Immunogen Description	Raised against a 15 amino acid peptide from near the amino terminus of human STEAP3.
Target Name	STEAP3
Other Names	Six transmembrane epithelial antigen of prostate 3, dudulin-2
Accession No.	Swiss-Prot:Q658P3Gene ID:55240
Uniprot	Q658P3
GeneID	55240;
Concentration	1mg/ml
Formulation	Supplied in PBS containing 0.02% sodium azide.
Storage	Can be stored at -20°C, stable for one year. As with all antibodies care should be taken to avoid repeated freeze thaw cycles. Antibodies should not be exposed to prolonged high temperatures.

Images



Western blot analysis of STEAP3 in rat liver tissue lysate with STEAP3 antibody at (A) 1 and (B) 2 ug/mL.



Immunohistochemistry of STEAP3 in mouse liver tissue with STEAP3 antibody at 2.5 ug/mL.

Background

The six-transmembrane epithelial antigen of prostate 3 (STEAP3) is a member of a family of metalloreductases identified as cell-surface antigens in prostate tissue. Similar to two other members of the STEAP family (STEAP 2 and STEAP4), STEAP3 promotes both iron and copper reduction. STEAP3 is highly expressed in hematopoietic tissues and colocalizes with the transferrin endosome. Overexpression of STEAP3 stimulates iron reduction; mice lacking STEAP3 are deficient in erythroid ferrireductase activity, suggesting that STEAP3 is an endosomal ferrireductase required for transferrin-dependent iron uptake in erythroid cells.

Note: This product is for in vitro research use only