

TEM7 Antibody

Catalog No: #24581

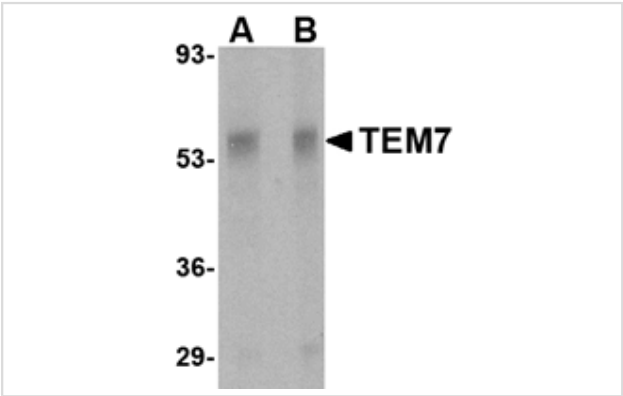


Orders: order@signalwayantibody.com
Support: tech@signalwayantibody.com

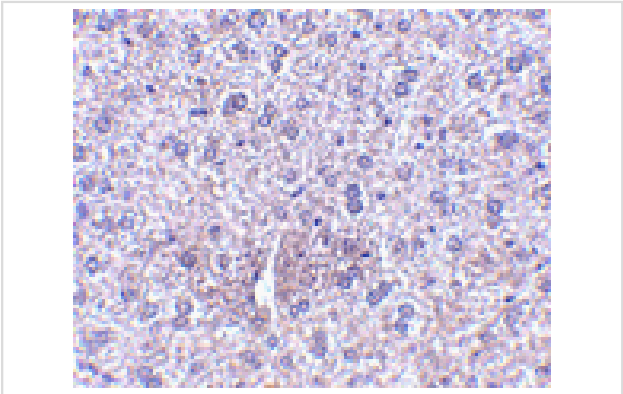
Description

Product Name	TEM7 Antibody
Host Species	Rabbit
Clonality	Polyclonal
Purification	Affinity chromatography purified via peptide column
Applications	ELISA WB IHC
Species Reactivity	Hu Ms Rt
Immunogen Type	Peptide
Immunogen Description	Raised against a 16 amino acid peptide from near the center of human TEM7.
Target Name	TEM7
Other Names	Tumor endothelial marker 7, TEM3, plexin domain-containing protein 1, PLXDC1
Accession No.	Swiss-Prot:Q8IUK5Gene ID:57125
Uniprot	Q8IUK5
GeneID	57125;
Concentration	1mg/ml
Formulation	Supplied in PBS containing 0.02% sodium azide.
Storage	Can be stored at -20°C, stable for one year. As with all antibodies care should be taken to avoid repeated freeze thaw cycles. Antibodies should not be exposed to prolonged high temperatures.

Images



Western blot analysis of TEM7 in rat liver tissue lysate with TEM7 antibody at (A) 0.5 and (B) 1 ug/mL.



Immunohistochemistry of TEM7 in mouse liver tissue with TEM7 antibody at 2.5 ug/mL.

Background

Tumor endothelial marker 7 (TEM7) was identified through serial analysis of gene expression on endothelial cells isolated from human normal and malignant colorectal tissues. Further experiments verified TEM7 was highly expressed in the endothelium of numerous other cancer types including breast, lung and brain tumors. At least four isoforms of TEM7 are known to exist; these include intracellular, secreted, and membrane-bound forms. A homologous protein, TEM7R (also known as PLXDC2), acts as a binding partner to TEM7 and is also abundantly expressed in the endothelium of malignant colorectal cancer but is absent or rare in normal colon mucosa. High expression of TEM7 is associated with metastasis and poor survival of patients with osteogenic sarcoma.

Note: This product is for in vitro research use only