

## RTP801 Antibody

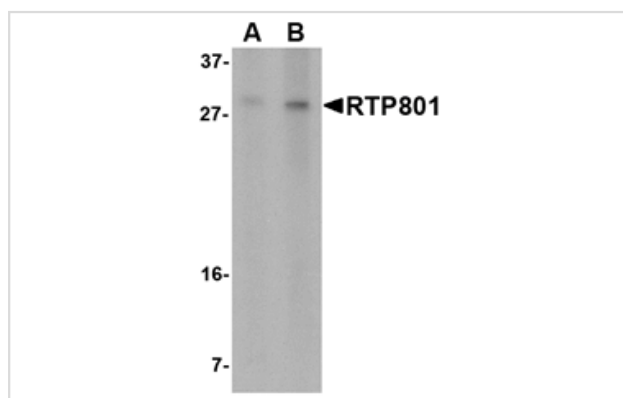
Catalog No: #24649

Orders: [order@signalwayantibody.com](mailto:order@signalwayantibody.com)Support: [tech@signalwayantibody.com](mailto:tech@signalwayantibody.com)

## Description

Product Name	RTP801 Antibody
Host Species	Rabbit
Clonality	Polyclonal
Purification	Affinity chromatography purified via peptide column
Applications	ELISA WB
Species Reactivity	Hu Ms Rt
Immunogen Type	Peptide
Immunogen Description	Raised against a 14 amino acid peptide from near the amino terminus of human RTP801.
Target Name	RTP801
Other Names	DNA damage inducible transcript 4, DDIT4, Dig2, REDD-1
Accession No.	Swiss-Prot:Q9NX09Gene ID:54541
Uniprot	Q9NX09
GeneID	54541;
Concentration	1mg/ml
Formulation	Supplied in PBS containing 0.02% sodium azide.
Storage	Can be stored at -20°C, stable for one year. As with all antibodies care should be taken to avoid repeated freeze thaw cycles. Antibodies should not be exposed to prolonged high temperatures.

## Images



Western blot analysis of RTP801 in 293 cell lysate with RTP801 antibody at (A) 2 and (B) 4 ug/mL.

## Background

RTP801 was initially identified as a gene induced by DNA damage, and later found to also be regulated by other cellular stresses such as hypoxia and glucocorticoid treatment. Recently, RTP801 has been shown to act as a mediator of tuberous sclerosis complex (TSC)-dependent regulation of the mammalian Target of Rapamycin (mTOR), an evolutionarily conserved serine/threonine kinase that regulates cell growth and cell cycle. In response to energy stress, RTP801 inhibits mTOR function, resulting in dephosphorylation of downstream targets such as ribosomal protein S6 kinase 1 and 4EBP1 and decreasing cell growth. Disregulation of RTP801 may thus contribute to human tumorigenesis.

---

Note: This product is for in vitro research use only