

GRTP1 Antibody

Catalog No: #24676

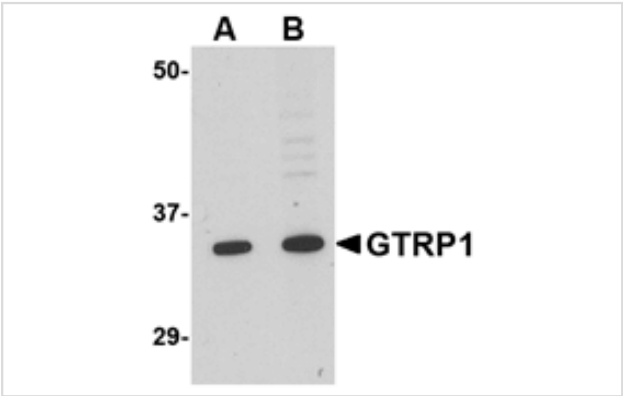


Orders: order@signalwayantibody.com
Support: tech@signalwayantibody.com

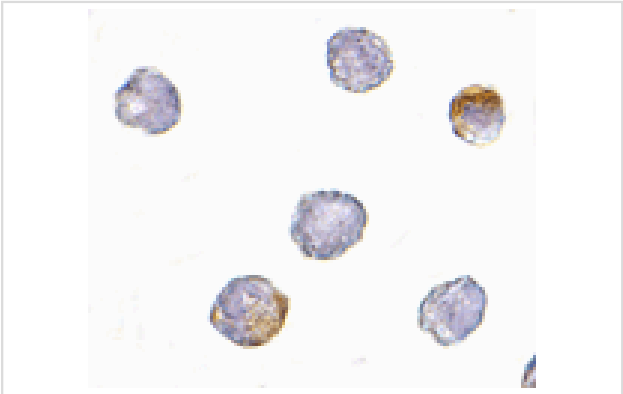
Description

Product Name	GRTP1 Antibody
Host Species	Rabbit
Clonality	Polyclonal
Purification	Affinity chromatography purified via peptide column
Applications	ELISA WB ICC
Species Reactivity	Hu Ms Rt
Immunogen Type	Peptide
Immunogen Description	Raised against a 18 amino acid peptide from near the amino terminus of human GRTP1.
Target Name	GRTP1
Other Names	Growth hormone regulated TBC protein 1, TBC1 domain family member 6
Accession No.	Swiss-Prot:Q5TC63Gene ID:79774
Uniprot	Q5TC63
GeneID	79774;
Concentration	1mg/ml
Formulation	Supplied in PBS containing 0.02% sodium azide.
Storage	Can be stored at -20°C, stable for one year. As with all antibodies care should be taken to avoid repeated freeze thaw cycles. Antibodies should not be exposed to prolonged high temperatures.

Images



Western blot analysis of GRTP1 in K562 cell lysate with GRTP1 antibody at (A) 1 and (B) 2 ug/mL.



Immunocytochemistry of GRTP1 in K562 cells with GRTP1 antibody at 2.5 ug/mL.

Background

Growth hormone regulated TBC protein 1 (GRTP1) was identified through microarray analysis as a gene whose expression is regulated by growth hormone (GH). It contains the TBC signature motif of GTPase activator proteins of Rab-like small GTPases. GRTP1 mRNA is expressed at highest levels in testes, and is also present in kidney, lung, liver, and intestine. Administration of GH to mice resulted in an increase in GRTP1 mRNA in testes, but a decrease of GRTP1 mRNA in kidney and liver. GRTP1 was identified as an HIV dependency factor (HDF), suggesting that GRTP1 may be an important drug target in HIV treatment. At least three isoforms of GRTP1 are known to exist; this antibody should recognize all isoforms.

Note: This product is for in vitro research use only