

CSN8 Antibody

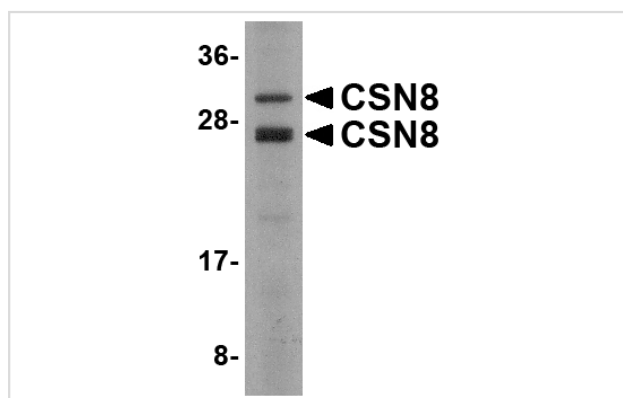
Catalog No: #24682

Orders: order@signalwayantibody.comSupport: tech@signalwayantibody.com

Description

Product Name	CSN8 Antibody
Host Species	Rabbit
Clonality	Polyclonal
Purification	Affinity chromatography purified via peptide column
Applications	ELISA WB
Species Reactivity	Hu Ms Rt
Immunogen Type	Peptide
Immunogen Description	Raised against a 15 amino acid peptide near the carboxy terminus of the human CSN8.
Target Name	CSN8
Other Names	COP9 signalosome complex subunit 8, SGN8, JAB1-containing signalosome subunit 8
Accession No.	Swiss-Prot:Q99627 Gene ID:10920
Uniprot	Q99627
GeneID	10920;
Concentration	1mg/ml
Formulation	Supplied in PBS containing 0.02% sodium azide.
Storage	Can be stored at -20°C, stable for one year. As with all antibodies care should be taken to avoid repeated freeze thaw cycles. Antibodies should not be exposed to prolonged high temperatures.

Images



Western blot analysis of CSN8 in Human liver lysate with CSN8 antibody at 2 ug/mL.

Background

The COP9 signalosome (CSN) is an evolutionarily conserved protein complex of the eight subunits that interacts with deubiquitinating enzymes and protein kinases and is highly homologous to the lid sub-complex of 26S proteasome. The CSN complex is an essential regulator of the ubiquitin conjugation pathway by mediating the deneddylation of the SCF-type E3 ligase complexes, which leads to a decrease in ubiquitin ligase activity of SCF-complexes such as SCF, CSA or DDB2. It is also involved in phosphorylation of p53, c-jun/JUN, ITPK1 and IRF8/ICSBP, possibly via its association with CK2 and PKD kinases. CSN8 encodes the smallest and the least conserved but first identified subunit of CSN. Recent studies show CSN8 is essential for Drosophila development and is essential for peripheral T cell homeostasis and antigen receptor-induced entry into the cell cycle from quiescence.

Note: This product is for in vitro research use only