

EVER2 Antibody

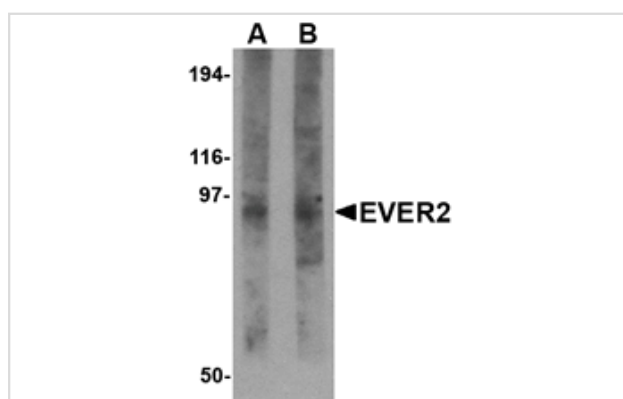
Catalog No: #24707

Orders: order@signalwayantibody.comSupport: tech@signalwayantibody.com

Description

Product Name	EVER2 Antibody
Host Species	Rabbit
Clonality	Polyclonal
Purification	Affinity chromatography purified via peptide column
Applications	ELISA WB
Species Reactivity	Hu Ms Rt
Specificity	At least two isoforms of EVER2 are known to exist; this antibody will only recognize the larger isoform. EVER2 has no cross-reactivity to EVER1.
Immunogen Type	Peptide
Immunogen Description	Raised against a 18 amino acid peptide from near the amino terminus of human EVER2.
Target Name	EVER2
Other Names	Transmembrane channel-like protein 8, TMC8
Accession No.	Swiss-Prot:Q8IU68Gene ID:147138
Uniprot	Q8IU68
GeneID	147138;
Concentration	1mg/ml
Formulation	Supplied in PBS containing 0.02% sodium azide.
Storage	Can be stored at -20°C, stable for one year. As with all antibodies care should be taken to avoid repeated freeze thaw cycles. Antibodies should not be exposed to prolonged high temperatures.

Images



Western blot analysis of EVER2 in rat thymus tissue lysate with EVER2 antibody at (A) 1 and (B) 2 ug/mL.

Background

Epidermodysplasia verruciformis (EV) is an autosomal recessive genodermatosis associated with a high risk of skin cancers resulting from a high susceptibility to infection by specific human papillomaviruses. Mutations in two homologous genes EVER1 and EVER2 cause the majority of EV cases. These two proteins form a complex and interact with the zinc transporter ZnT-1 in the endoplasmic reticulum. Cells lacking EVER2 accumulated higher levels of zinc in the nucleolus and nucleus compare to those cells with and intact EVER2 gene, indicating that one role of EVER2 is to regulate the intracellular distribution of zinc.

Note: This product is for in vitro research use only