

BICD1 Antibody

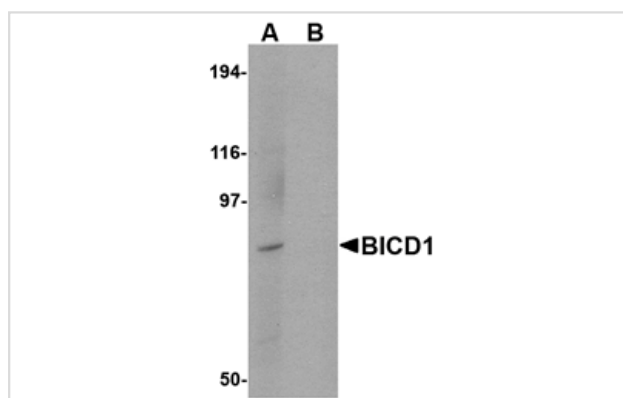
Catalog No: #24710

Orders: order@signalwayantibody.comSupport: tech@signalwayantibody.com

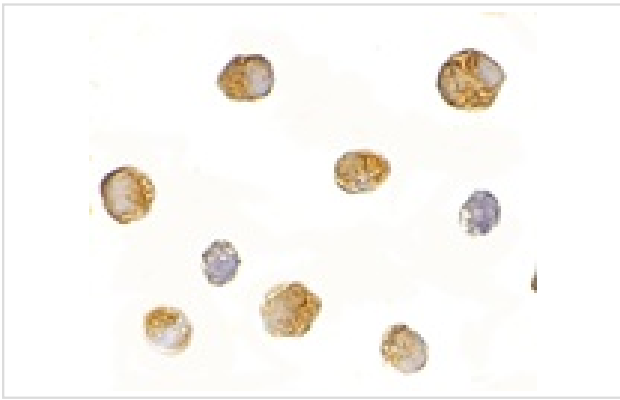
Description

| | |
|-----------------------|---|
| Product Name | BICD1 Antibody |
| Host Species | Rabbit |
| Clonality | Polyclonal |
| Purification | Affinity chromatography purified via peptide column |
| Applications | ELISA WB ICC |
| Species Reactivity | Hu Ms Rt |
| Specificity | At least two isoforms of BICD1 are known to exist; this antibody will only recognize the larger isoform. |
| Immunogen Type | Peptide |
| Immunogen Description | Raised against a 15 amino acid peptide from near the carboxy terminus of human BICD1. |
| Target Name | BICD1 |
| Other Names | Bicaudal D homolog 1 |
| Accession No. | Swiss-Prot:Q96G01Gene ID:636 |
| Uniprot | Q96G01 |
| GeneID | 636; |
| Concentration | 1mg/ml |
| Formulation | Supplied in PBS containing 0.02% sodium azide. |
| Storage | Can be stored at -20°C, stable for one year. As with all antibodies care should be taken to avoid repeated freeze thaw cycles. Antibodies should not be exposed to prolonged high temperatures. |

Images



Western blot analysis of BICD1 in Daudi cell lysate with BICD1 antibody at 1 ug/mL in (A) the absence and (B) the presence of blocking peptide.



Immunocytochemistry of BICD1 in Daudi cells with BICD1 antibody at 2.5 ug/mL.

Background

BICD1 was initially identified as the human homolog to *Drosophila* Bicaudal-D protein that forms part of the cytoskeleton and mediates the correct sorting of mRNAs for oocyte- and axis-determining factors during oogenesis. BICD1 can bind to dynein-dynactin and co-localizes with Rab6A on the trans-Golgi network and cytoplasmic vesicles, suggesting BICD1 regulates COPI-independent Golgi-ER transport. BICD1 will also interact with Rab6B, a Rab6 isoform that is expressed primarily in brain. Live cell imaging showed bi-directional movement of Rab6B structures in SK-N-SH neurites, indicating that BICD1 is involved in the Rab6B regulation of retrograde cargo transport in neuronal cells.

Note: This product is for in vitro research use only