

Nanos1 Antibody

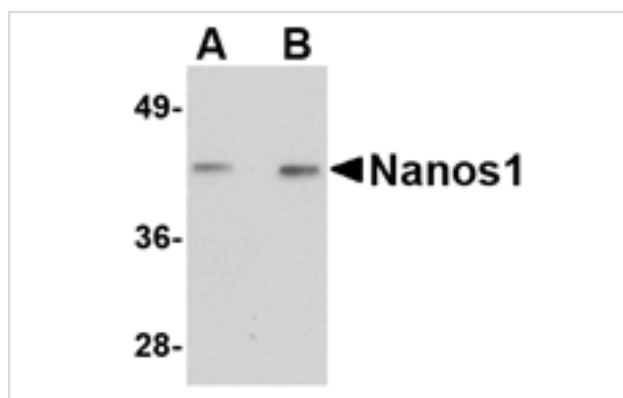
Catalog No: #24715

Orders: order@signalwayantibody.comSupport: tech@signalwayantibody.com

Description

Product Name	Nanos1 Antibody
Host Species	Rabbit
Clonality	Polyclonal
Purification	Affinity chromatography purified via peptide column
Applications	ELISA WB
Species Reactivity	Hu Ms Rt
Immunogen Type	Peptide
Immunogen Description	Raised against a 14 amino acid peptide from near the center of human Nanos1.
Target Name	Nanos1
Other Names	Nanos homolog 1, NOS1
Accession No.	Q8WY41
Uniprot	Q8WY41
GeneID	340719;
Concentration	1mg/ml
Formulation	Supplied in PBS containing 0.02% sodium azide.
Storage	Can be stored at -20°C, stable for one year. As with all antibodies care should be taken to avoid repeated freeze thaw cycles. Antibodies should not be exposed to prolonged high temperatures.

Images



Western blot analysis of Nanos1 in rat brain tissue lysate with Nanos1 antibody at (A) 1 and (B) 2 ug/mL.

Background

Nanos1 is one of three known mammalian homologs to the *Drosophila* gene *nanos*. Nanos1 is an RNA-binding protein containing a zinc-finger motif and is expressed in the developing nervous system and continues in the adult brain. Interestingly, unlike mice deficient in either *nanos2* or *nanos3*, mice lacking the *nanos1* gene develop normally with no sign of abnormalities. Recently it has been found that expression of *nanos1* mRNA is down-regulated by E-cadherin in a human breast cancer cell line and the amino-terminal domain on Nanos1 interacts with the E-cadherin-binding protein p120ctn. Furthermore, overexpression of Nanos1 in human colorectal DLD1 cancer cells functionally abolished cell-cell adhesion, allowing the cancer cells to develop strong migratory and invasive properties. These results suggest that targeting Nanos1 might prove an effective strategy in the treatment of E-cadherin-negative tumors.

Note: This product is for in vitro research use only