

NIPSNAP2 Antibody

Catalog No: #24803

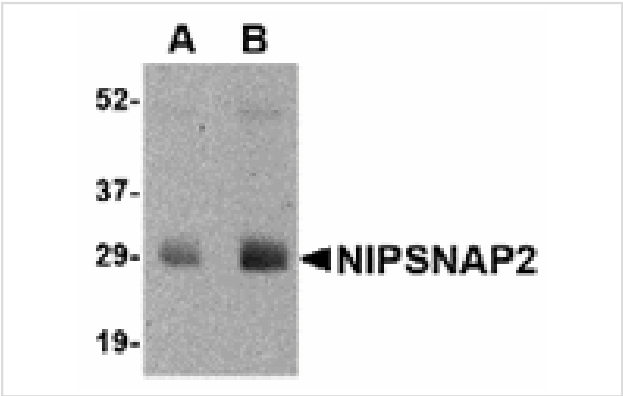


Orders: order@signalwayantibody.com
Support: tech@signalwayantibody.com

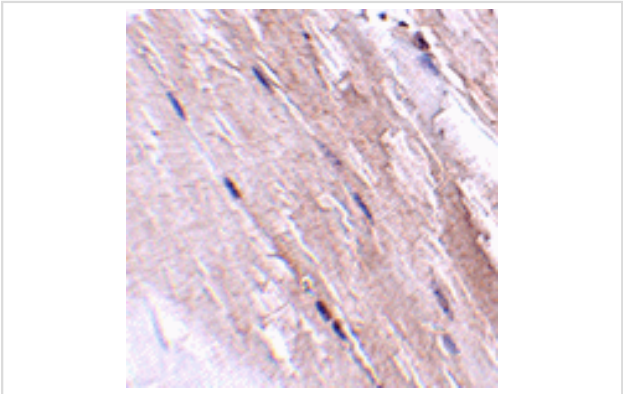
Description

Product Name	NIPSNAP2 Antibody
Host Species	Rabbit
Clonality	Polyclonal
Purification	Affinity chromatography purified via peptide column
Applications	ELISA WB IHC
Species Reactivity	Hu Ms Rt
Immunogen Type	Peptide
Immunogen Description	Raised against a 14 amino acid peptide near the amino terminus of human NIPSNAP2.
Target Name	NIPSNAP2
Other Names	Non-neuronal SNAP25-like protein 2, Glioblastoma-amplified sequence, GBAS
Accession No.	O75323
Uniprot	O75323
GeneID	2631;
Concentration	1mg/ml
Formulation	Supplied in PBS containing 0.02% sodium azide.
Storage	Can be stored at -20°C, stable for one year. As with all antibodies care should be taken to avoid repeated freeze thaw cycles. Antibodies should not be exposed to prolonged high temperatures.

Images



Western blot analysis of NIPSNAP2 in human skeletal muscle tissue lysate with NIPSNAP2 antibody at (A) 0.5 and (B) 1 ug/mL.



Immunohistochemistry of NIPSNAP2 in mouse skeletal muscle tissue with NIPSNAP2 antibody at 2.5ug/mL.

Background

The NIPSNAP proteins comprise a family of evolutionarily well-conserved proteins with strong sequence similarity to the central portion of a protein encoded by *C. elegans* chromosome III between a 4-nitrophenylphosphatase (NIP) domain and non-neuronal SNAP25-like protein. NIPSNAP2, a novel gene encoding a protein with tyrosine phosphorylation sites and a transmembrane domain, is co-amplified with EGFR in approximately 40% of glioblastomas, the most common and malignant form of central nervous system tumors. It is widely expressed and most abundant in heart and skeletal muscle. NIPSNAP proteins have been suggested to be important in vesicular transport. NIPSNAP2 antibody is predicted to not cross-react with any other members of the NIPSNAP protein family.

Note: This product is for in vitro research use only