

PIG-Y Antibody

Catalog No: #24804

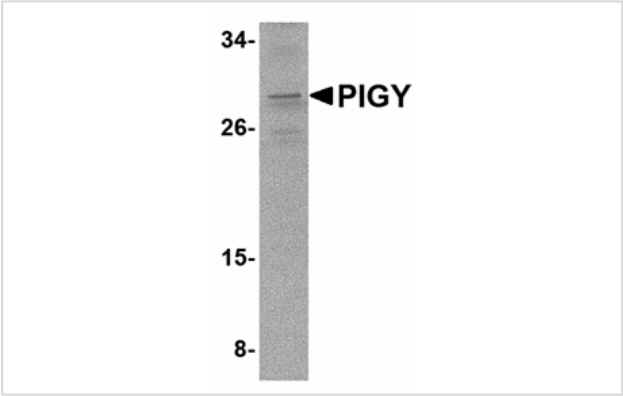


Orders: order@signalwayantibody.com
Support: tech@signalwayantibody.com

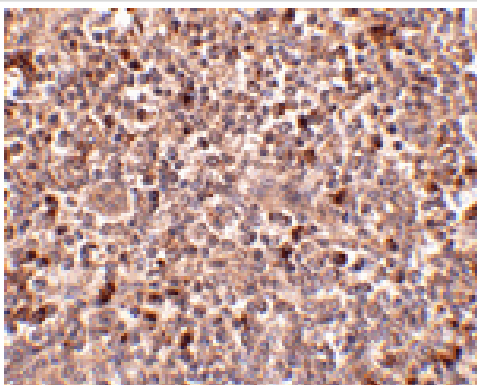
Description

Product Name	PIG-Y Antibody
Host Species	Rabbit
Clonality	Polyclonal
Purification	Affinity chromatography purified via peptide column
Applications	ELISA WB IHC
Species Reactivity	Hu Ms
Specificity	This antibody only detects isoform 1 of PIG-Y.
Immunogen Type	Peptide
Immunogen Description	Raised against a 16 amino acid peptide near the carboxy terminus of human PIG-Y.
Target Name	PIG-Y
Other Names	Phosphatidylinositol glycan anchor biosynthesis class Y, PreY, PIGY
Accession No.	Swiss-Prot:Q3MUY2Gene ID:84992
Uniprot	Q3MUY2
GeneID	84992;
Concentration	1mg/ml
Formulation	Supplied in PBS containing 0.02% sodium azide.
Storage	Can be stored at -20°C, stable for one year. As with all antibodies care should be taken to avoid repeated freeze thaw cycles. Antibodies should not be exposed to prolonged high temperatures.

Images



Western blot analysis of PIG-Y in A-20 cell lysate with PIG-Y antibody at 2 ug/mL.



Immunohistochemistry of PIGY in human spleen tissue with PIGY antibody at 2.5 ug/mL.

Background

Glycosylphosphatidylinositol (GPI) lipid anchoring is an important post-translational modification of proteins that takes place in the endoplasmic reticulum. The synthesis of GPI is initiated by GPI-N-acetylglucosaminyltransferase (GPI-GnT), a complex of proteins including PIG-A, PIG-H, PIG-C, GPI1, and DPM2. PIG-Y, the mammalian homolog to yeast Eri1p, is also thought to be involved in the biosynthesis of GPI. The PIG-Y gene encodes two proteins, one of which arises from leaky scanning of the mRNA.

Note: This product is for in vitro research use only