

KLRA1 Antibody

Catalog No: #24828

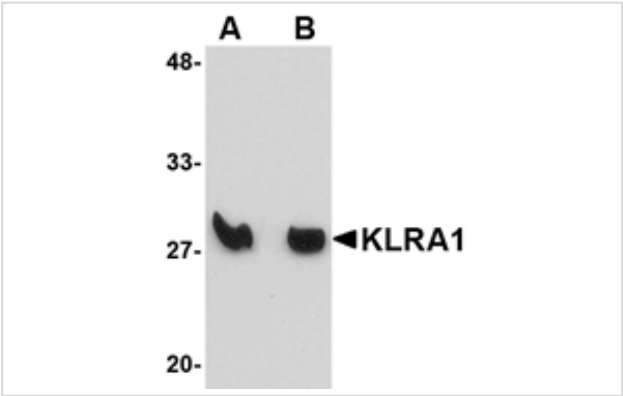


Orders: order@signalwayantibody.com
Support: tech@signalwayantibody.com

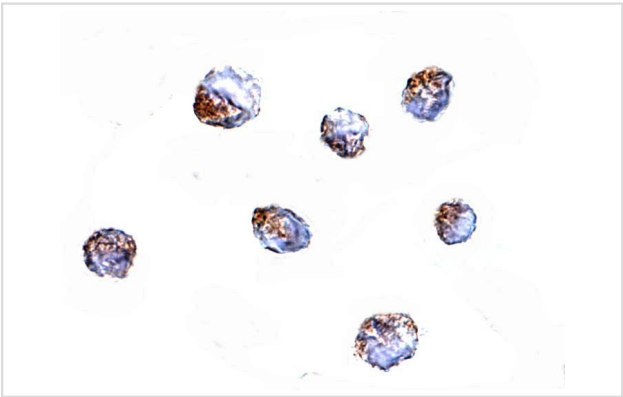
Description

Product Name	KLRA1 Antibody
Host Species	Rabbit
Clonality	Polyclonal
Purification	Affinity chromatography purified via peptide column
Applications	ELISA WB ICC
Species Reactivity	Hu Ms Rt
Specificity	At least three isoforms of KLRA1 are known to exist; this antibody recognizes only the long isoform.
Immunogen Type	Peptide
Immunogen Description	Raised against a 13 amino acid peptide near the center of human KLRA1.
Target Name	KLRA1
Other Names	Killer cell lectin-like receptor subfamily A member 1, Ly49, Ly49L
Accession No.	Swiss-Prot:EAW96194Gene ID:
Concentration	1mg/ml
Formulation	Supplied in PBS containing 0.02% sodium azide.
Storage	Can be stored at -20°C, stable for one year. As with all antibodies care should be taken to avoid repeated freeze thaw cycles. Antibodies should not be exposed to prolonged high temperatures.

Images



Western blot analysis of KLRA1 in mouse spleen tissue lysate with KLRA1 antibody at (A) 1 ug/mL and (B) 2 ug/mL.



Immunocytochemistry of KLRA1 in 293 cells with KLRA1 antibody at 4 ug/mL.

Background

KLRA1 (also known as Ly49L) is a member of the LY49 family of receptors in Natural Killer (NK) cells that bind to major histocompatibility complex (MHC) class 1. These proteins are classified as either activating or inhibitory receptors based on whether they possess an immunoreceptor tyrosine-based inhibitory motif (ITIM) in their cytoplasmic region (for inhibitory receptors), or an immunoreceptor tyrosine-based activation motif (ITAM) that transmits activating signals resulting in phosphorylation of several substrates. KLRA1 is thought to be an activating receptor, inducing DAP12 phosphorylation in response to antibody-mediated cross-linking of KLRA1 on NK cells.

Note: This product is for in vitro research use only